



## Building Connections: How Communities Can Use Federal Funds to Connect People to Place, Opportunity, and Each Other

October 18, 2022

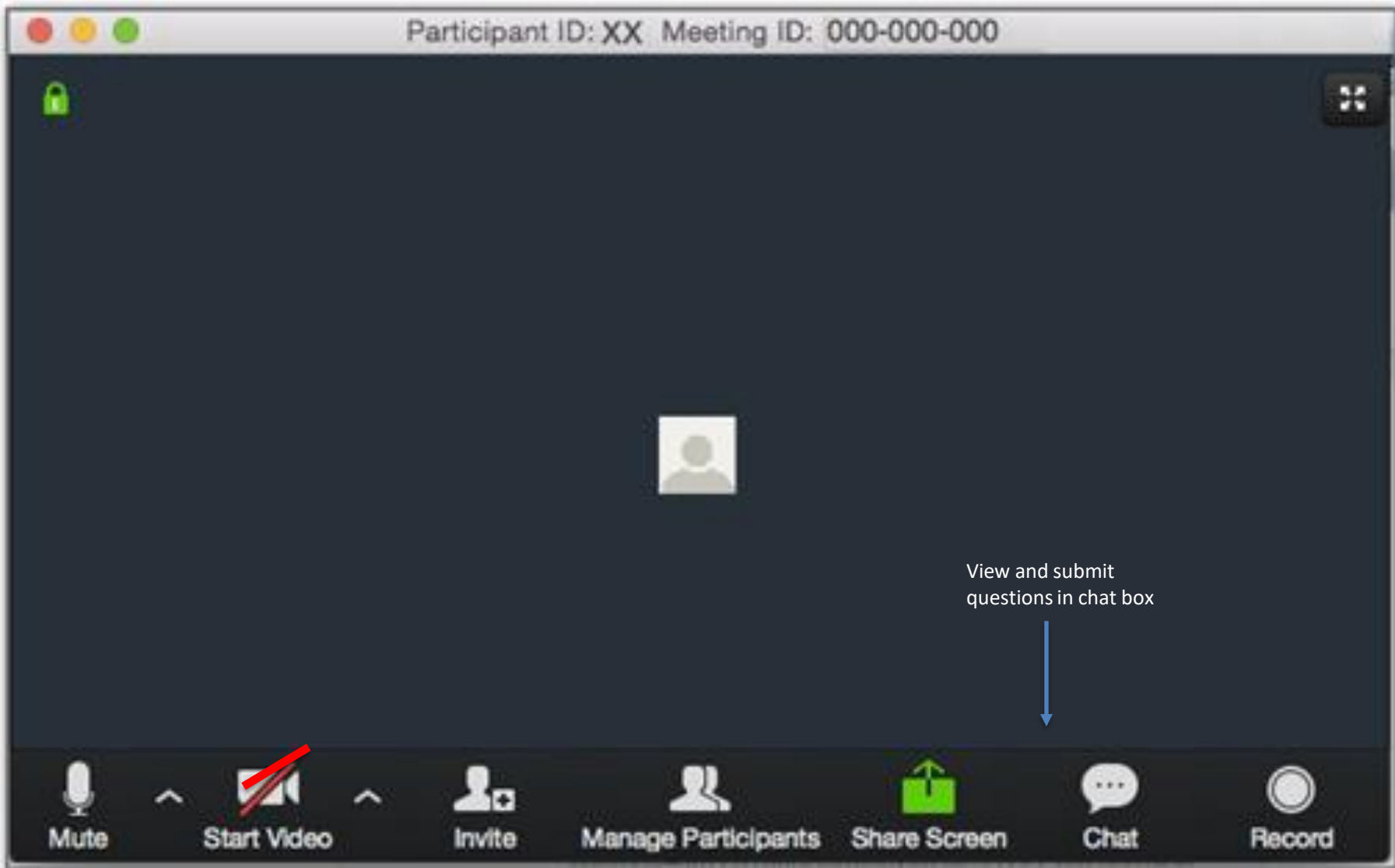




## MISSION

The mission of the Safe Routes Partnership is to advance safe walking and rolling to and from schools and in everyday life, improving the health and well-being of people of all races, income levels, and abilities, and building healthy, thriving communities for everyone.





View and submit questions in chat box

SESSION IS BEING RECORDED & WILL BE SHARED ONLINE  
PLEASE ASK QUESTIONS AS THEY COME UP





## Agenda

- Introductions
- Framing the Conversation: Investing in making communities, parks, and green space more connected, accessible, and equitable
- Funding Opportunities
  - Grants for Arts Projects
  - Our Town Grant Program
  - Outdoor Recreation Legacy Partnership Program
  - Land and Water Conservation Fund – Stateside
  - Clean Water State Revolving Fund
  - Carbon Reduction Program
  - Community Development Block Grant
  - Transportation Alternatives
  - Safe Routes to School
  - Recreational Trails
- Q & A





## TODAY'S PRESENTERS



**Marisa Jones**  
**Policy & Partnerships Director**  
Safe Routes Partnership



**Carolyn Berndt**  
**Legislative Director, Sustainability**  
National League of Cities



**Stephanie Flynn**  
**Federal Grants Manager**  
Trust for Public Land



**Q & A MODERATOR**

**Melanie Robinson**  
**Program Manager, Children & Nature**  
National League of Cities





Poll:  
What sector  
do you  
represent?



Photo Credit: <https://guruth.medium.com/strategic-stewardship-revaluing-the-elements-of-a-thriving-community-fec12f229797>





SAFE ACCESS TO PARKS IS A RIGHT &  
A NECESSITY FOR HEALTHY COMMUNITIES.



© 2021 Safe Routes Partnership

Parks offer abundant physical, social, and mental health benefits to people playing, exercising, and spending time in them.



# IMPROVE PARK ACCESS. IMPROVE COMMUNITIES.



**ENVIRONMENTAL  
JUSTICE**

**PARKS**



**ANTI-RACISM**



© 2021 Safe Routes Partnership

Advocate for Safe Routes to Parks in communities that have had the least investment in high-quality parks and connections to those spaces.  
Learn more at [saferoutespartnership.org](https://saferoutespartnership.org)



# Our work to create strong, equitable, thriving communities is interconnected

**The Economic Case For Investing In The Arts**

**'Once-in-a-generation' \$1.2 trillion infrastructure bill heads to Biden's desk**

Published Nov. 8, 2021

**The Climate Crisis – A Race We Can Win**

**CPSTF Recommends Park, Trail, and Greenway Infrastructure Interventions to Increase Physical Activity**



Our work to create strong, equitable, thriving communities recognizes the co-benefits our interconnectivity

engagement joy  
accessible fairness  
quality of life  
creativity sustainability  
connection  
community  
economic thriving expression  
health equity mobility  
justice resilience





PS 156 Waverly and LS 392 Brooklyn, NY

We saw these barren asphalt schoolyards and we recognized an amazing opportunity to reinvent them as vibrant city parks.

Photo by: Joe Martinez




Trust for Public Land



Connecting everyone to the outdoors™





**Our mission is to  
create parks and  
protect land for people,  
ensuring healthy,  
livable communities  
for generations  
to come.**



# THROUGH THE GENEROSITY OF OUR SUPPORTERS:

WE'VE COMPLETED OVER

**5,000** projects  
parks, trails, schoolyards,  
and iconic outdoor places



GENERATED OVER

**\$84B** in public funding for  
parks and access to  
lands and waters



AND CREATED ACCESS TO OVER

**3.7 million** acres  
of public land







Connecting everyone to the outdoors™

# National Endowment for the Arts







# National Endowment for the Arts

## Grants for Arts Projects

### Benefits:

- Community Engagement
- Equity
- Health

### What it Funds:

- Community Engagement (i.e. events)
- Activities dependent on discipline
  - Visual Arts (creation of murals, sculptures)
  - Design (of public spaces)
- Priority: funding artists

### Who is eligible to apply?

- Nonprofit, tax exempt 501(c)3 US organizations
- Units of state or local government
- Federally recognized tribal communities or tribes



**TRUST FOR  
PUBLIC  
LAND™**

Connecting everyone to the outdoors™

# Grants for Arts Projects - Visual Arts

New Freedom Park – Denver, CO



# National Endowment for the Arts

## Our Town Grant Program

### Benefits:

- Community Engagement
- Equity
- Health

### What it Funds:

- Community Engagement (i.e. events)
- Creative placemaking activities
- Priority: funding artists

### Who is eligible to apply?

- Nonprofit, tax exempt 501(c)3 US organizations
- Units of state or local government
- Federally recognized tribal communities or tribes







**EWKSIKNI MAQLAQS, SAT'WAAYA DMOOYEEGA T'EYNNI STAPGA**  
 PEOPLE FROM THE LAKES, PONDS, AND MARSHES, HELP START NEW PLANT GROWTH



The Klamath Tribes have relied on a variety of plants for survival since time immemorial. The Klamath culture and way of life is based upon hunting, fishing, gathering, and trapping.

The culture of the Klamath Tribes was based on a yearly cycle of travel from different villages and gathering spots. They depended on foods such as salmon, roots, berries, deer, and elk. Year after year the seasonal pattern of resources was followed.

In spring, the Tribes would fish for salmon, trout, and sucker fish along the banks of the rivers. In the late spring and early summer, the men would go out to gather roots such as ipso (Gees) and camas (boqs). In summer, wocus (wioqas) was harvested. In late summer months, the women would pick a variety of berries in the mountains including huckleberries (Piwam), chokecherries (doycqas), and wild plum (dmolo). For the men the late summer was a time to hunt for deer and elk. By late fall, they would return to their winter villages. In the winter months, the cambium layer of Ponderosa Pine trees (Goo-s) between the bark and the tree could be used as a food source.



Connecting everyone to the outdoors™

# Our Town - Creative Placemaking

## Chiloquin Schoolyard - Chiloquin, OR





# NEA Grant Programs: Helpful Links & Resources

## Grants for Arts Projects:

- <https://www.arts.gov/grants/grants-for-arts-projects>
- Awards range from \$10,000 - \$100,000
- Grant period: 1-2 years

## Our Town Grants:

- <https://www.arts.gov/grants/our-town>
- Awards range from \$25,000 - \$150,000
- Grant period: 1-2 years

## Other Resources and Helpful Links:

- The Toolkit for Health, Arts, Parks and Equity
  - <https://www.tpl.org/the-toolkit-for-health-arts-parks-and-equity>
- Field Guide for Creative Placemaking and Parks
  - <https://www.tpl.org/resource/field-guide-creative-placemaking-and-parks>



**TRUST FOR  
PUBLIC  
LAND™**

Connecting everyone to the outdoors™

# Land and Water Conservation Fund State Assistance Programs

Midway Peace Park – St. Paul, MN





# Outdoor Recreation Legacy Partnership (ORLP) Program

## Benefits:

- Climate Resilience
- Community Engagement
- Equity
- Health

## What it Funds:

- Acquisition and/or development of land for public, outdoor recreation

## Who is eligible to apply?

- State Lead Agencies for LWCF are applicants
- Project sponsors must be a local or state government agency or federally recognized tribe
- Project sponsors must be, or represent, an incorporated city or town of 30k+





**TRUST FOR  
PUBLIC  
LAND™**

Connecting everyone to the outdoors™

# Johnson Oak Park

Bridgeport, CT





# ORLP FUNDING

Federal FY14-FY20







# ORLP FUNDING

Federal FY14 - FY22





# ORLP Program: Helpful Links & Resources

## ORLP Notice of Funding Opportunity on grants.gov

- <https://www.grants.gov/web/grants/view-opportunity.html?oppld=342812>
- Awards range from \$300,000 - \$10,000,000
- Application due dates are: January 31, 2023 and May 31, 2023
- Grant period: 1-3 years

## TPL's ORLP Grant Application Toolkit

- <https://www.tpl.org/resource/orlp-grant-toolkit>

## National Park Service's ORLP Website

- <https://www.nps.gov/subjects/lwcf/outdoor-recreation-legacy-partnership-grants-program.htm>

## City Parks Alliance's 9/13 ORLP Technical Support Webinar Recording with the National Park Service

- <https://cityparksalliance.org/event/outdoor-recreation-legacy-partnership-program-technical-assistance/>



# State and Local Assistance Program

## “LWCF Stateside”

### Benefits:

- Climate Resilience
- Health
- Mobility
- Equity

### What it Funds:

- Acquisition and/or development or renovation of land for outdoor recreation purposes

### Who is eligible to apply?

- Local units of government participate in the program as subrecipients of the state, which bears primary grant responsibility







Connecting everyone to the outdoors™

# Shur View Natural Area & Open Space Park

Greeley / Windsor, CO

# LWCF Stateside Program: Helpful Links & Resources

## TPL Map of All Past LWCF Stateside Projects (and all other LWCF Programs & Projects)

- <https://lwcf.tplgis.org/mappast/>

## LWCF Coalition Stateside website

- <https://lwcfcoalition.org/state-and-local-assistance>

## LWCF Stateside FY22 Total Apportionment

- <https://www.doi.gov/pressreleases/departments-interior-announces-279-million-support-public-parks-expand-outdoor>

## National Park Service's Stateside Website

- <https://www.nps.gov/subjects/lwcf/stateside.htm>

## LWCF State Assistance Program Manual

- <https://www.nps.gov/subjects/lwcf/upload/LWCF-FA-Manual-Vol-71-3-11-2021-final.pdf>



# LWCF Stateside v. ORLP (1 of 3)

## LWCF Stateside Formula

### Project Sponsor

- Local gov't or federally recognized Tribe

### Poverty Level of Community Served

- No federally-imposed requirements

### Project Location

- No federally-imposed requirements

## ORLP

### Project Sponsor

- Local gov't or federally recognized Tribe, and
- Must be, or represent, a city of 30k+

### Poverty Level of Community Served

- Census Tract poverty level of 20%+ (or 10 percentage points more than city, county, state)

### Project Location

- Within 10-minute (.5 mile) walk of target community
- In, or abutting, city of 30k+

## LWCF Stateside v. ORLP (2 of 3)

### LWCF Stateside Formula

#### Park Desert Focus

- None

#### Funding Max/Min

- Determined by State based on their annual apportionment

#### Community Involvement/ Partnerships

- No federal requirements

### ORLP

#### Park Desert Focus

- Must be in an area that has no, or almost no, publicly-accessible outdoor recreational facilities

#### Funding Max/Min

- \$10,000,000 maximum grant award
- 300,000 minimum grant award

#### Community Involvement/ Partnerships

- Integral from initial planning through implementation



# LWCF Stateside v. ORLP (3 of 3)

## LWCF Stateside Formula

### Matching Share

- 1:1 match required

### Limit on Number of Grants

- No limit

### Priorities Beyond SCORP

- None required

### Competition

- State competition

## ORLP

### Matching Share

- 1:1 match required
- Projects with non-public contributions prioritized

### Limit on Number of Grants

- 2 ORLP grants per site/park

### Priorities Beyond SCORP

- Competition priorities
- Priorities of additional state, county, or local plans (beyond SCORP)

### Competition

- National competition



Trust for Public Land (TPL) is a national nonprofit that works to connect everyone to the benefits and joys of the outdoors. As a leader in equitable access to the outdoors, TPL works with communities to create parks and protect public land where it is needed most.

Since 1972, TPL has protected more than 3 million acres of public land, created more than 5,000 parks, trails, schoolyards, and iconic outdoor places, raised \$84 billion in public funding for parks and public lands, and connected more than 9 million people to the outdoors.

**Connecting everyone to the outdoors™**

**Stephanie Flynn**

Federal Grants Manager

[stephanie.flynn@tpl.org](mailto:stephanie.flynn@tpl.org)

202-330-4716

# Thank you!



# Building Connections: How Communities Can Use Federal Funds to Connect People to Place, Opportunity and Each Other

October 18, 2022



**NLC** NATIONAL  
LEAGUE  
OF CITIES  
CITIES STRONG TOGETHER



# NLC

## WHO WE ARE

**The National League of Cities (NLC) is the voice of America's cities, towns and villages, representing more than 200 million people across the country.**







OUR MISSION

*To strengthen local leadership, influence federal policy and drive innovative solutions.*

- **Community Benefits** – green infrastructure
- **Eligible Uses**
  - Construction of publicly owned treatment works
  - Nonpoint source
  - National estuary program projects
  - Decentralized wastewater treatment systems
  - Stormwater
  - Water conservation, efficiency & reuse
  - Watershed pilot projects
  - Energy efficiency
  - Water reuse
  - Security measures at publicly owned treatment works
  - Technical assistance

- **Who + How to Apply**

- Local governments, water utilities apply to their state
- State Project Priority List
- State Intended Use Plan
- BIL: 49% principal forgiveness, 51% grants
- State Affordability Criteria



- [City of Wilmington, DE](#) - \$15M CWSRF loan to address flooding by replacing their combined sewer system with separate sanitary and stormwater collection systems. Created opportunity for permanent conservation of wetlands.
- [City of Griffin, GA](#) - \$4M CWSRF loan for stormwater improvements at city's Veteran's Memorial Park and Golf Course.
- [Providence, RI](#) - \$2.7M CWSRF loan for stormwater improvements at Charlotte Hope Plaza and creation of 15,000 square feet of publicly accessible green space.



- [EPA Overview of Clean Water SRF Eligibilities](#)
- [EPA SRF Memorandum to States](#)
- [NLC Clean Water Infrastructure Fact Sheet](#)
- [State CWSRF Program Contacts](#)
- [Environmental Benefits of CWSRF Green Infrastructure Projects](#)

**NLC DELIVERS**

### ARPA Clean Water Infrastructure Fact Sheet

The American Rescue Plan Act (ARPA), signed into law by President Biden on March 11, 2021, provided \$350 billion in Coronavirus State and Local Fiscal Recovery Funds (SLFRF) to state, local, territorial and Tribal governments. Water and sewer infrastructure investments marked one of the six ways that funds could be used to promote COVID-19 recovery and to address climate change impacts. Guidance from the U.S. Department of the Treasury identified wastewater infrastructure projects as eligible if they met the U.S. Environmental Protection Agency's Clean Water State Revolving Fund (CWSRF) eligibility criteria.

The CWSRF identifies 15 main project categories, but acknowledges other options are available:

1. Centralized Wastewater Treatment	9. Landfills
2. Energy Conservation	10. Habitat Protection and Restoration
3. Water Conservation	11. Silviculture
4. Stormwater Design and Infrastructure	12. Desalination
5. Agricultural Best Management Practices	13. Groundwater Protection and Restoration
6. Decentralized Wastewater Treatment	14. Surface Water Protection and Restoration
7. Resource Extraction	15. Planning/Assessment (i.e., Asset Management)
8. Contaminated Sites	

The Final Rule for the SLFRF allows [additional flexibility](#) on stormwater and other water projects.

This fact sheet highlights the CWSRF program, two gateways to addressing wastewater challenges (i.e., gray and green infrastructure), how wastewater infrastructure investments can promote climate resilience, highlighted cases and helpful resources.

**Definitions: Gray & Green Infrastructure**

**Gray Infrastructure**

CWSRF eligible projects allow for gray and green infrastructure use. Gray infrastructure is designed to move stormwater away from the built environment and impervious surfaces (e.g., roadways, parking lots, rooftops, etc.) into collection systems (e.g., gutters, curbs, drains, etc.). The CWSRF funds a variety of gray infrastructure stormwater management projects, including projects to upgrade or build wastewater treatment plants.

**Cities Connecting Children to Nature**

NLC NATIONAL LEAGUE OF CITIES  
CITIES STRONG TOGETHER

Children & Nature Network

### Initial Guidance on Using American Rescue Plan Act Funds to Bring Nature's Benefits to Children

The American Rescue Plan Act (ARPA), which includes \$65 billion in direct aid to cities, towns, and villages via a State and Local Fiscal Recovery Fund, offers an unprecedented funding opportunity to increase children's regular connections to nature and promote healthy child development. [Guidance from the U.S. Treasury](#) places emphasis on "serving the hardest-hit communities and families," including to "address educational disparities" and "promote healthy childhood environments." It also notes "investments in parks, public plazas, and other public outdoor recreation spaces may be responsive to the needs of disproportionately impacted communities by promoting healthier living environments and outdoor recreation and socialization to mitigate the spread of COVID-19."

In line with this guidance, the [Cities Connecting Children to Nature](#) (CCCN) partnership of the [National League of Cities](#) and Children & Nature Network recommends local leaders consider the below uses of ARPA funds that can bring nature's benefits to children in their local neighborhoods where they live, study, and play.

**Getting More Young Children Outdoors, More Often**

ARPA makes funds available to connect young children to nature, directly through Head Start and also via child care block grants. Cities that administer, or have partners hosting, Head Start programs can use Head Start funds (\$1 billion) to support [early childhood outdoor learning and nature play](#). The [ARPA guidance](#) from the Office of Head Start describes uses of funds as follows: "Purchasing or enhancing outdoor learning spaces, including nature-based learning and outdoor classrooms. Creating play areas and landscape features that promote exploration and discovery in a natural environment, such as plantings, gardens, and 'loose parts' (i.e., materials for construction and pretend play), rather than traditional play structures or playgrounds."

Another approach involves showing how outdoor learning environments and nature-based programming will contribute to the [\\$24 billion ARPA-funded effort to stabilize the child care industry](#). City leaders can connect with [state Child Care and Development Fund administrators](#) to suggest prioritizing outdoor learning, highlighting the research on how nature-based approaches fulfill two key ARPA goals: providing safe and [healthy learning environments](#), and [mental health support for children](#) and educators. In addition, focusing on the [maternal and child health benefits](#) of time in nature may help make the necessary connections to join projects under the \$150 million ARPA-funded expansion of the Maternal, Infant and Early Childhood Home Visiting Program.



- **Community Benefits** – Transportation Alternative Infrastructure

- **Eligible Uses**

- Public transportation projects (bus rapid transit etc.)
- Transportation Alternative projects (planning, design, construction)
- Traffic mitigation and control projects
- Alternative fuel vehicles
- Reduce emissions at port facilities
- Reduce environmental impacts of freight movement
- Diesel engine retrofits
- Replace street lighting and traffic control devices with energy-efficient alternative

- **Who + How to Apply**

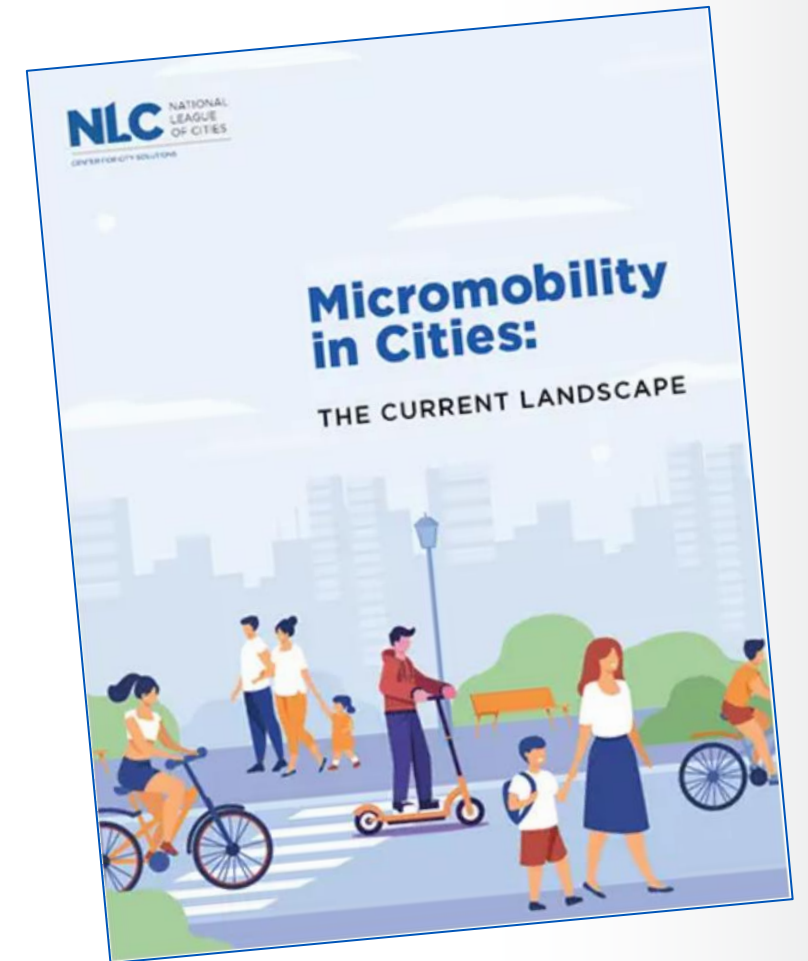
- Formula to States – 65% utilized in urbanized areas of various population levels
- Develop Carbon Reduction Program Strategy by Nov. 2023 in consultation with MPOs
- Combine with other federal programs or funding that reduce emissions from transportation, such as zero emission vehicles, charging infrastructure, congestion pricing

- [Cedar Rapids, IA](#)
  - Create 15 minute neighborhoods to reduce sprawl
  - Enhance transit & shared transportation options in under-resourced communities – golf carts
  - EVs + charging infrastructure
- [Mercer Island, WA](#)
  - Pilot program for electric-assist rental bikes
  - Improve bicycle route signage
  - EVs + charging infrastructure
- [Houston, TX](#)
  - Decrease VMT – multimodal transportation + Transit Oriented Development





- [FHWA Carbon Reduction Program Implementation Guidance](#)
- [FHWA Carbon Reduction Program Fact Sheet](#)
- [Cutting Transportation Emissions with New Carbon Reduction Program](#)
- [Congestion Pricing in Cities](#)
- [Micromobility in Cities](#)
- [Driving Down Emissions: Transportation, Land Use and Climate Change](#)



- **Community Benefits** – Community Improvements and Economic Supports for Low- & Moderate-Income People
- **Eligible Uses**
  - Flexible funding supports a host of activities including:
    - Affordable Housing
    - Infrastructure and Public Facility Improvements
    - Economic Development
    - Social Services

## • **Who + How to Apply**

- Metro Cities and Urban Counties are entitled to receive annual CDBG grants.
  - Metro Cities populations are 50,000 and above
  - Urban Counties populations are 200,000 and above
  - 70% of annual CDBG funds are allocated to metro cities and urban counties
- Small Cities and Counties are eligible to receive CDBG funds from their states.
  - States receive 30% of annual CDBG funds
  - States reallocate their CDBG funds to local governments that do not receive annual CDBG funding directly.
  - States generally award annual CDBG funds on a competitive basis.



- [Lexington, KY](#)

- Charles Young Park Playground
- Addresses long-standing inequities in Lexington's East End neighborhood
- Support numerous programs and community events for adjacent neighborhoods

- [Fitchburg, MA](#)

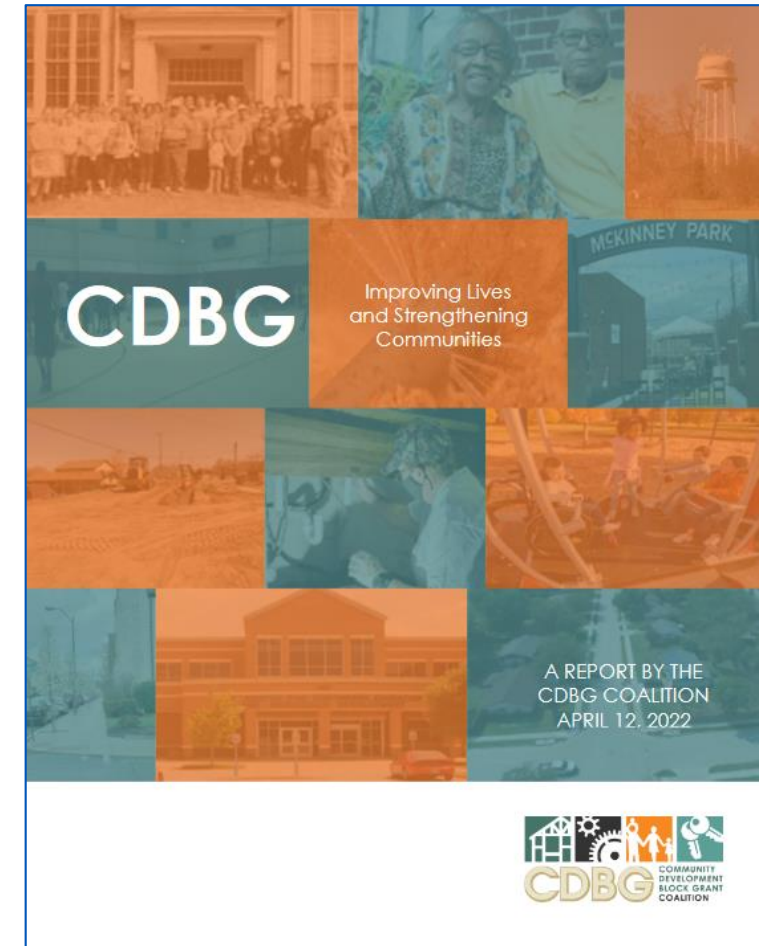
- Sam Pawlak Community Playground
- Only inclusive playground for children with disabilities in a 20-mile radius
- CDBG funded the purchase of inclusive play structures.



- [Detroit, MI](#)

- Ella Fitzgerald Greenway
- Transforming publicly owned vacant land and buildings into community assets
- Converted approximately 30 vacant lots into the Ella Fitzgerald Greenway
- Adult exercise equipment also installed

- [CDBG Coalition Report 2022: Improving Lives and Strengthening Communities](#)
- [HUD: Explore CDBG Programs](#)
- [CDBG and HOME: Essential Grants for Mid-Sized Cities](#)





# QUESTIONS? GET IN TOUCH.

## **Carolyn Berndt**

Legislative Director, Sustainability  
National League of Cities

[berndt@nlc.org](mailto:berndt@nlc.org)

@BerndtCarolyn



@LEAGUEOFCITIES





# Transportation Alternatives Program

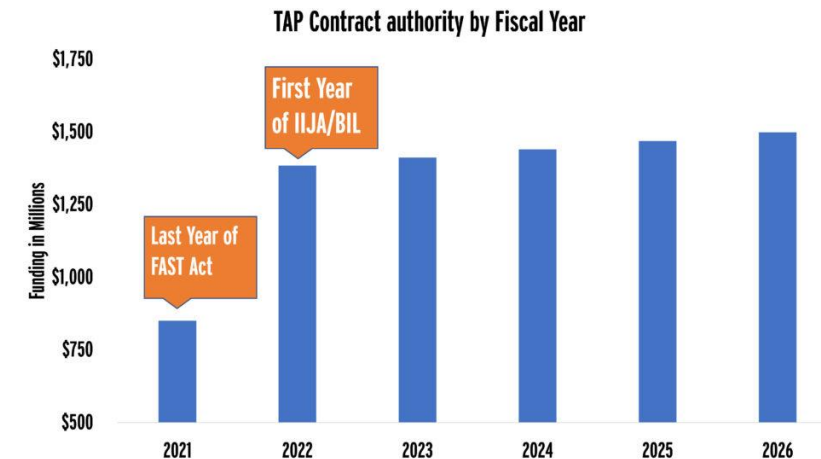


**Benefits:** mobility, safety, health

**What it funds:** The major federal source of transportation funding for bicycling, walking, and Safe Routes to School

**Who is eligible to apply?**

- Nonprofits
- Local governments, including schools
- Agencies/organizations responsible for transportation (see next slide)





# Transportation Alternatives Program Eligibility - Projects & Sponsors

## TAP Funding Supports:

- Sidewalks, crosswalks, and other pedestrian infrastructure
- Bike lanes and other bicycle infrastructure
- Safe Routes to School infrastructure and non-infrastructure
- Recreational trails
- Turnouts, overlooks, and viewing areas,
- Community improvement activities (outdoor advertising, historic transportation facilities, vegetation management, transportation-related archaeological activities)
- Environmental mitigation (stormwater management, wildlife connectivity)
- Converting highways/interstate routes to boulevards

## Who is eligible to apply?

- Local governments
- Regional transportation authorities
- Transit agencies
- State and local parks/public lands agencies
- Schools and school districts
- Tribal governments
- Nonprofits
- Small MPOs
- Other local/regional agencies that administer transportation or trails
- State DOTs may receive funds if requested by local government





# Transportation Alternatives Program Little Rock, Arkansas



Take a Family Walk on the Safe Routes to Parks Pop Up

LITTLE ROCK Family follow us: [Facebook icon] [Twitter icon] [Instagram icon]

by Alexis Peters on 9/22/2020 6:41am

- One year after a pop-up demonstration project to connect the Arkansas Children's Library, Little Rock Zoo, and War Memorial Park, the City of Little Rock received \$1 million in TAP funding to install permanent walking and biking lanes at that site.
- This project connects these essential community assets to nearby neighborhoods that live close to the park and library but are separated from them by Interstate 630.



## Safe biking, walking project aim

Lanes open to connect library, War Memorial Park by Rachel Herzog | September 20, 2020 at 4:35 a.m.





## Safe Routes to School Program



**Benefits:** health, quality of life, improved academic performance, access to community facilities

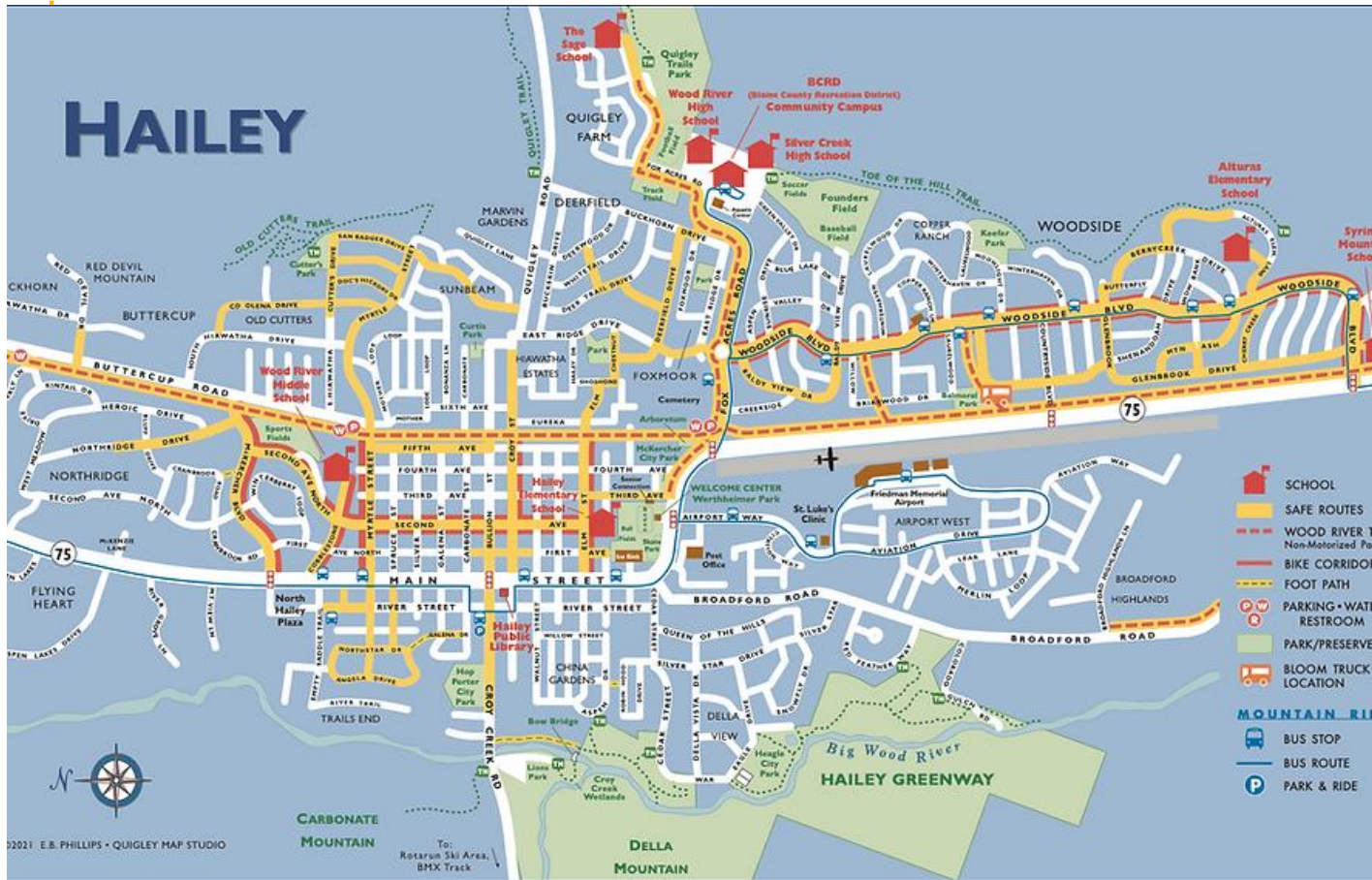
**What it funds:** Planning and construction of pedestrian and bicycle infrastructure within 2 miles of a K-12 school and education, encouragement events and programming

**Who is eligible to apply?**

- Nonprofits
- Schools and school districts
- Local governments (all TAP eligible entities)



# Safe Routes to School Program Blaine County, Idaho



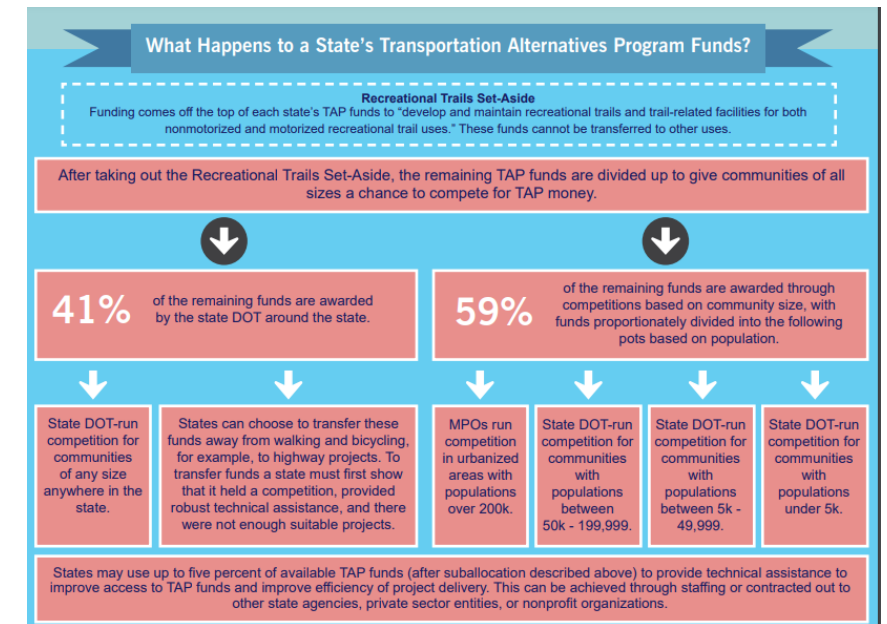
- This Safe Routes to School program, run by the local transit agency, Mountain Rides, spans four communities in the Wood River Valley of Idaho.
- This map shows how they make use of a 20 mile multi-use, non-motorized trail that connects the four towns, with bike corridors and foot paths that connect kids to schools and people of all ages to this greenway, park and green space, transit connections, and other essential community destinations.

Photo Credit: Safe Routes Wood River Valley <https://www.saferouteswoodrivervalley.com/>

# Helpful Links & Resources for Transportation Alternatives Program



- Every state receives funding, and there is funding set-aside for communities of all sizes.
- Administered by state departments of transportation and in urbanized areas, metropolitan planning organizations
- Infographic on how money gets from federal government to communities
  - [https://saferoutespartnership.org/sites/default/files/tap\\_funding\\_infographic\\_updated\\_final.pdf](https://saferoutespartnership.org/sites/default/files/tap_funding_infographic_updated_final.pdf)
- State-specific fact sheets with how much funding your state has and when competitions are next held:
  - [tinyurl.com/stateTAP](https://tinyurl.com/stateTAP)
- For more information: <https://saferoutespartnership.org/healthy-communities/policy-change/federal/BIL-background-resources>





# Recreational Trails Program



**Benefits:** quality of life, connectivity, health

**What it funds:** development and maintenance of recreational trails and trail-related facilities (motorized and non-motorized)

**Who is eligible to apply?**

- Private organizations (conservation or service corps, land trusts, trail orgs., etc.)
- Municipal agencies
- State agencies
- Federal agencies
- Other government agencies, such as tribal governments and transit operators
- For more [details](#)



Photo Credit: [https://www.caledonianrecord.com/news/local/public-boardwalk-completed-at-moose-bog-for-wildlife-viewing/article\\_f7dce2d9-a9db-554a-8e77-ec5cf953e2f.html](https://www.caledonianrecord.com/news/local/public-boardwalk-completed-at-moose-bog-for-wildlife-viewing/article_f7dce2d9-a9db-554a-8e77-ec5cf953e2f.html)

## Recreational Trails Program *Essex County, Vermont*



- Funding from the Recreational Trails Program enabled the development and construction of one of the state's longest ADA accessible trails in Vermont.
- This mile-long wildlife observation trail offers opportunities for birding and observation of local flora.



## Helpful Links & Resources for Recreational Trails Program



- Every state receives funding, but a state may opt-out.
- Administered by state departments of natural resources.
- State profiles and database of projects funded by Recreational Trails Program
  - <https://recreationaltrailsinfo.org/>
- Information from Federal Highway Administration
  - [https://www.fhwa.dot.gov/environment/recreational\\_trails](https://www.fhwa.dot.gov/environment/recreational_trails)

# Questions?

We're here to help!



[Marisa@saferoutespartnership.org](mailto:Marisa@saferoutespartnership.org)





# QUESTIONS & ANSWERS