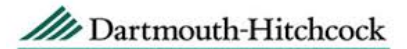


City of Lebanon Safe Routes to Play Initiative

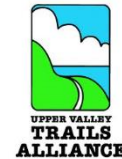
A Blueprint for Active Transportation for Children and Families

***Meghan Butts: Transportation Planner and GIS Senior Analyst
Upper Valley Lake Sunapee Regional Planning Commission
July 2019***



Background

- Safe Routes to Play (SRTP) is a **child-centered transportation planning process**
- Engaging youths
- Multiple partners including health care, transportation, recreation, municipal and regional planning

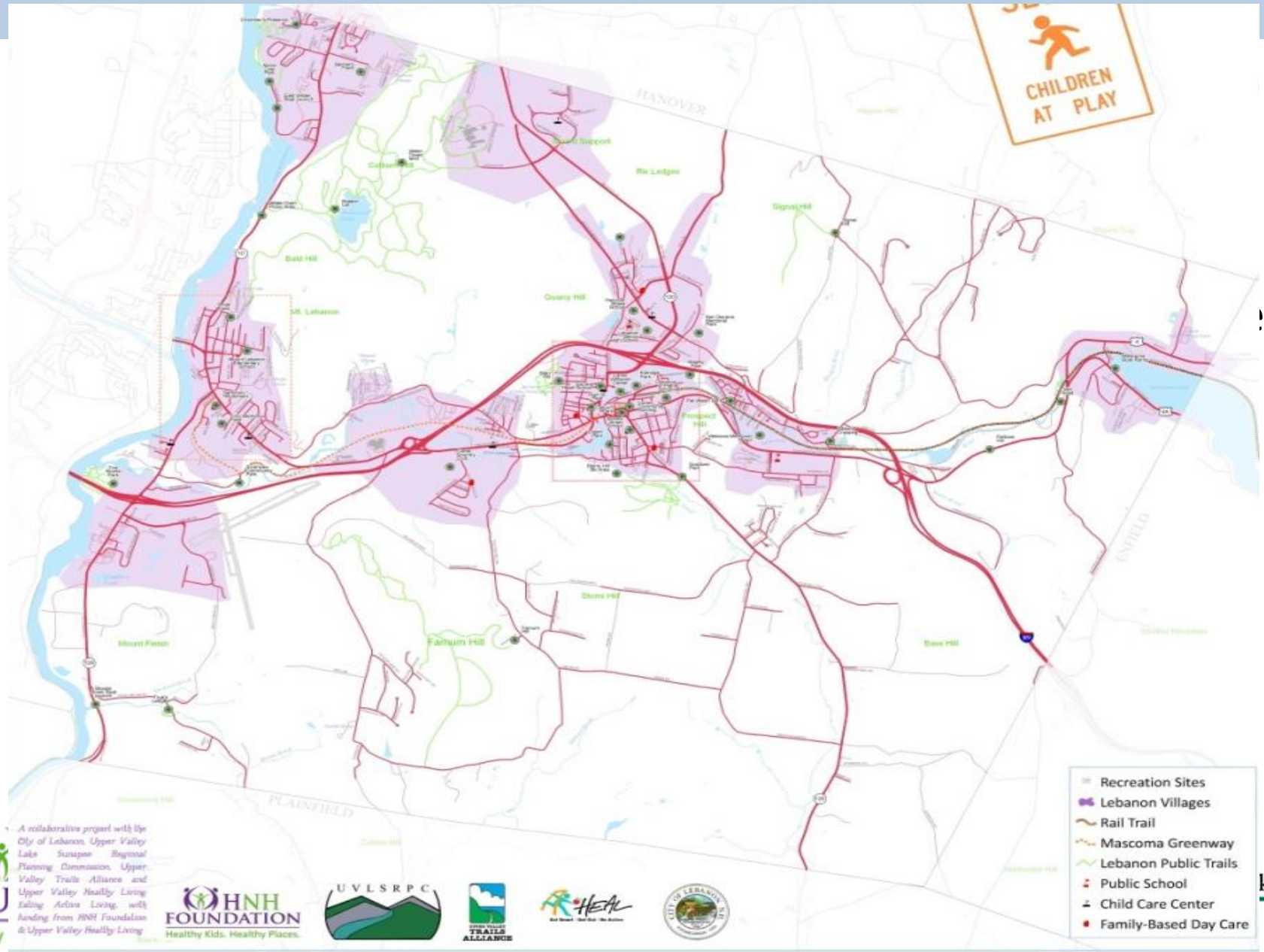


Public Outreach Methods

- Public Outreach for the Safe Routes to Play project was done in multiple forms:
 - Participatory mapping exercise done with walking tours (“walkabouts”) in four neighborhoods;
 - Participatory mapping exercise done at two School Open House events;
 - Parent surveys distributed online and as hardcopies to gather information about travel patterns to and from locations where children play.



Participatory Mapping Exercise

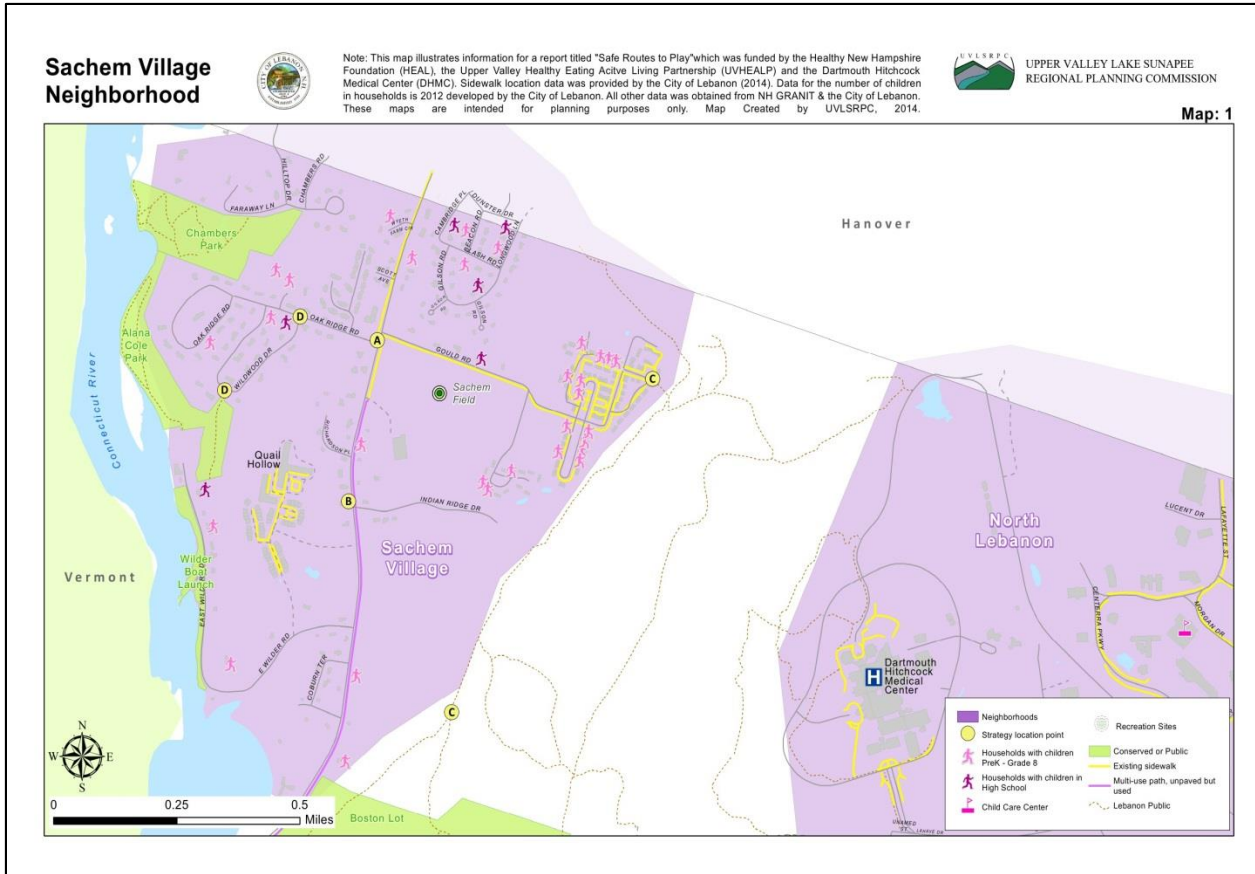


Key Themes from Public Meetings and Walkabouts

- Improving Existing Playgrounds for Children of All Age Groups
- Completing the Mascoma River Greenway
- Exploring Opportunities for New Trail Connections
- Addressing Locations with Safety Concerns



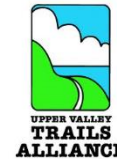
Improvement Strategies



- Construct project to install Rectangular Rapid Flashing Beacon and pedestrian refuge island at the intersection of NH Route 10/Gould/Oak Ridge Road
- Extend sidewalks southerly on the west side of NH Route 10 between Oak Ridge Road and Quail Hollow
- Develop a trail connection between Sachem Village and Boston Lot
- Develop a trail connection between Sachem Village and Alana Cole Park

Intersection Improvements

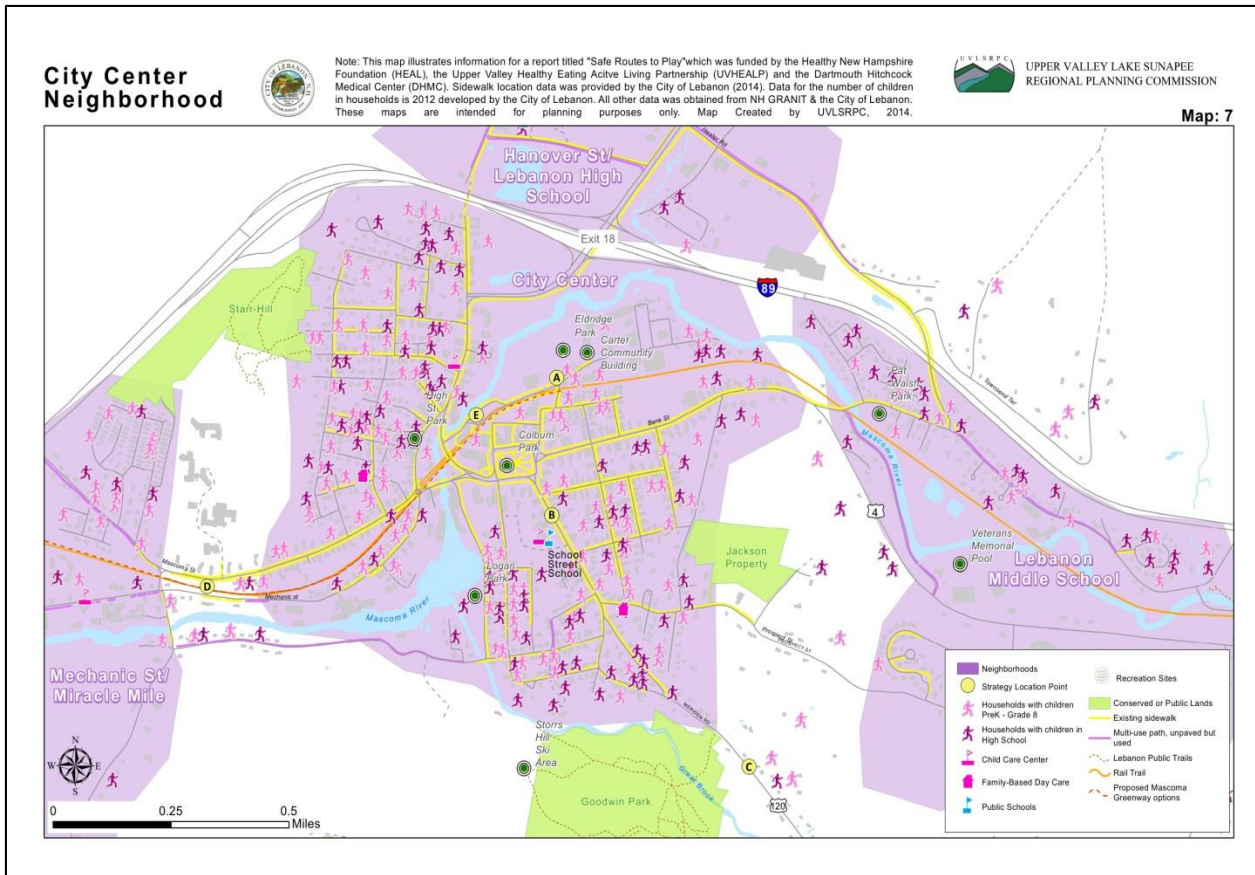
- This feedback regarding safety and a crash data sparked UVLSRPC to apply for a Road Safety Audit with NH DOT
- Multiple meetings with the Community
- Cooperative effort between the State, RPC, and City



Intersection Improvements



Improvement Strategies



- Complete the Mascoma River Greenway project to ensure neighborhood-level pedestrian and bicycle connectivity with downtown Lebanon and West Lebanon Village
- Improve crosswalks between the Northern Rail Trail and the CCBA
- Develop an access path/trail connecting Meriden Road (NH Route 120) with the Northern Rail Trail
- Construct Transportation Enhancement project to improve bicycle shoulder and sidewalks on Meriden Road
- Evaluate potential traffic calming measures on Taylor Street

Mascoma River Greenway

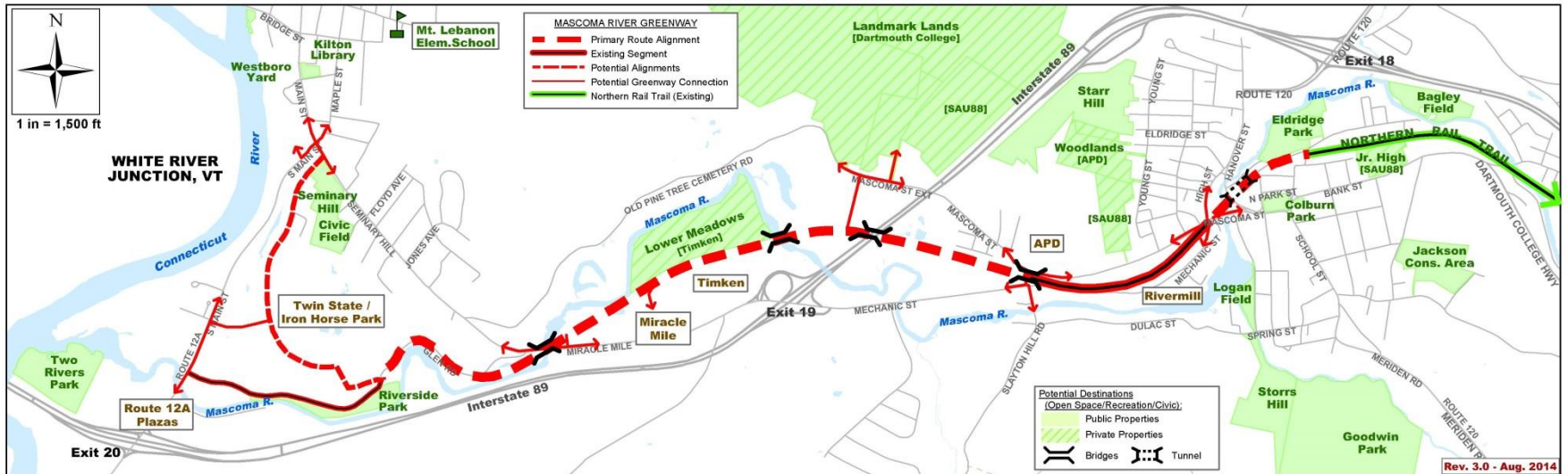


- Language developed in SRTP helped to demonstrate real data obtained from the public regarding the need for the MRG
- Barriers experienced by the community in regard to active transportation lack of sidewalks, speed of traffic, intersection safety were addressed by the MRG
- Maps were helpful tools to show youth living in proximity to the MRG



Mascoma River Greenway

Rail Trail Connecting Our Community



Continuing to Move Forward

- City of Lebanon has moved forward on more than half of the strategies listed in the plan
- More than just transportation



Questions?

Contact information

Meghan Butts

mbutts@uvlsrpc.org

603-448-1680

