



Safe Routes  
to School  
**National  
Partnership**

# Where the Duct Tape Meets the Road: Using Pop-Ups to Promote Safe Routes to School

June 15, 2017 1-2:00pm EST



## About the National Partnership

We are a nonprofit organization that advances **safe walking and bicycling** to and from schools, improves the health and wellbeing of **kids of all races, income levels and abilities**, and fosters the creation of **healthy communities for everyone.**

GoToWebinar Viewer

# Webinar Housekeeping

Audio: Use your microphone and speakers (VoIP) or call in using your telephone.

Dial: +1 (3: [redacted])  
Access Code: [redacted]  
Audio PIN: [redacted]

**CITRIX**

File View Help

Audio

Computer audio  
 Phone call

You are connected at  
+1 (213) 929-4232  
**Access Code:** 129-467-341

**Talking:** Sara Zimmerman

Questions

[Enter a question for staff]

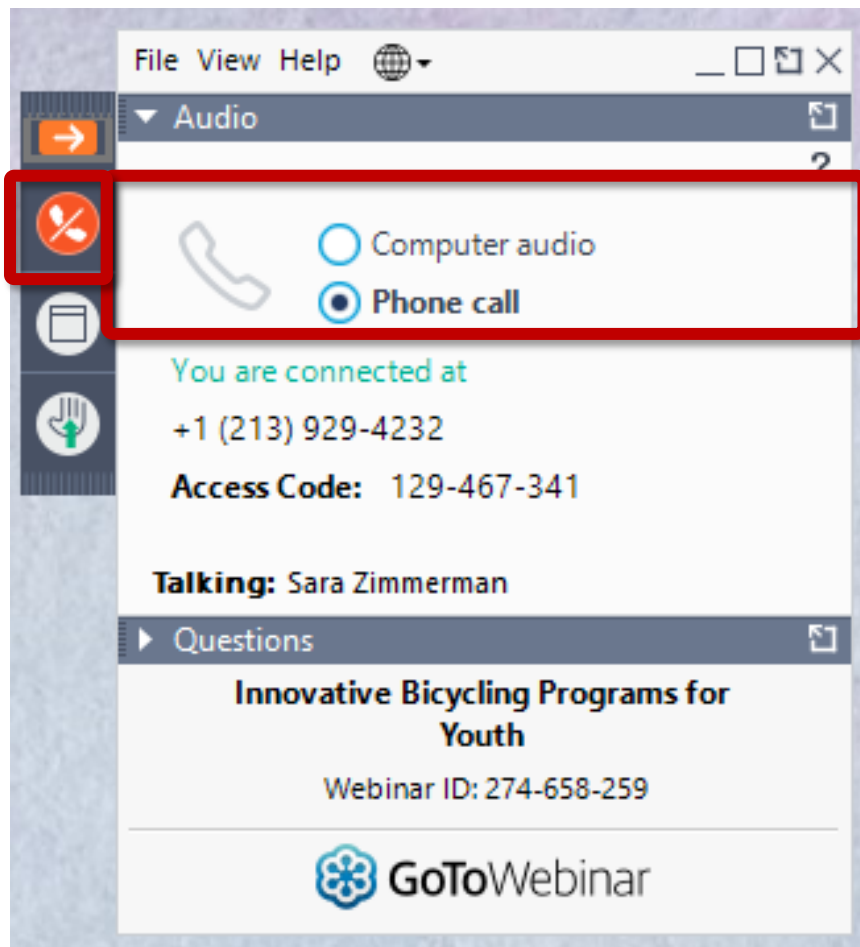
Send

**Innovative Cycling Programs for Youth**  
Webinar ID: 274-658-259

**This session is being recorded.**

**GoToWebinar**

# AUDIO CONTROLS



## AUDIO

Open or hide your control panel

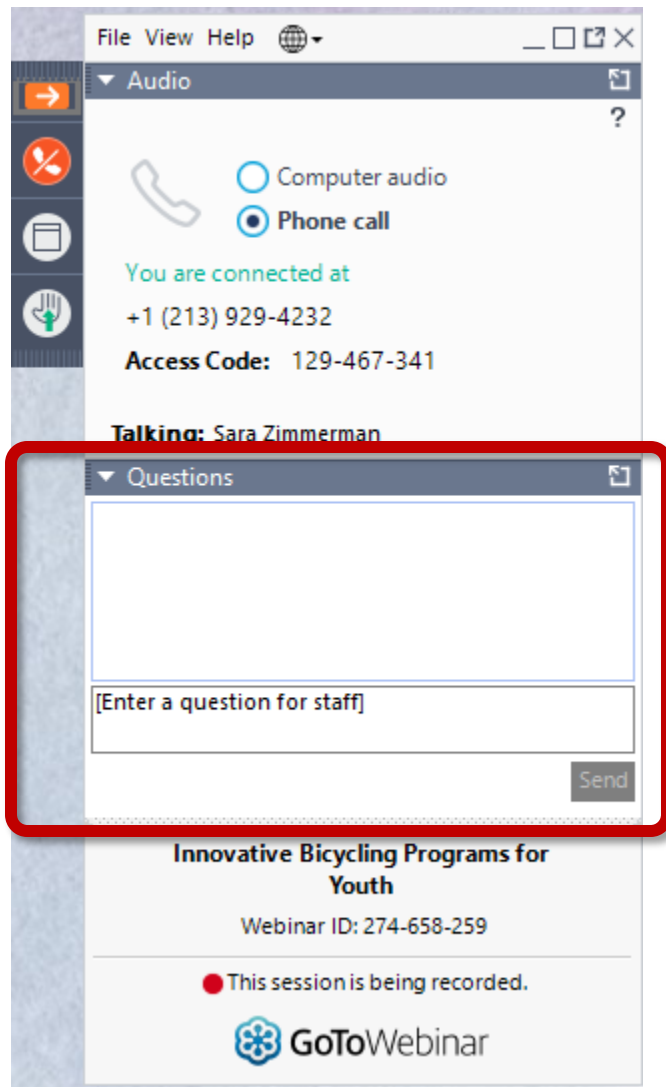
Join audio:

Choose "Telephone" and dial-in using numbers on screen

OR

Choose "Mic & Speakers" to use your computer's sound

# HAVE A QUESTION?

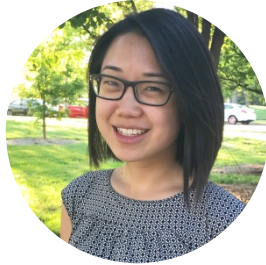


The screenshot shows a webinar interface with a top menu bar containing 'File View Help' and a globe icon. Below the menu is a toolbar with icons for navigation and audio. The main content area is divided into two panels: 'Audio' and 'Questions'. The 'Audio' panel shows options for 'Computer audio' and 'Phone call', with 'Phone call' selected. It also displays connection information: 'You are connected at +1 (213) 929-4232' and 'Access Code: 129-467-341'. The 'Questions' panel, highlighted with a red border, contains a large text input area with the placeholder text '[Enter a question for staff]' and a 'Send' button. At the bottom of the interface, the webinar title 'Innovative Cycling Programs for Youth' is displayed, along with the 'Webinar ID: 274-658-259' and a recording status indicator: 'This session is being recorded.' The GoToWebinar logo is at the bottom.

## QUESTIONS & COMMENTS

Submit your text questions and comments using the Questions Panel

# SPEAKERS



**Grace Kyung**  
Special Projects Director  
Trailnet



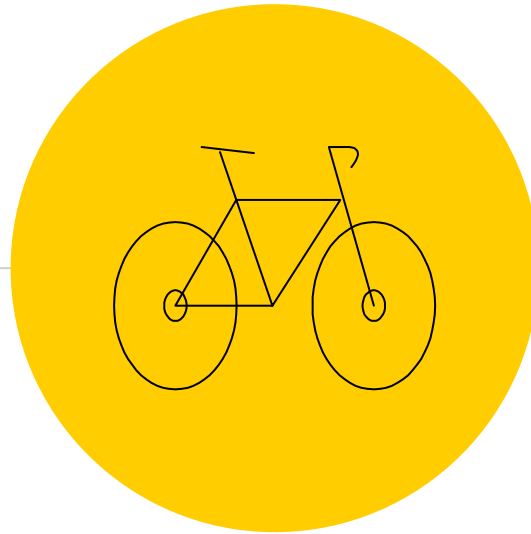
**Jeff Knowles**  
Associate Planner  
Alta Planning + Design



**Marisa Jones**  
Healthy Communities Manager  
Safe Routes to School National  
Partnership



Safe Routes  
to School  
**National  
Partnership**



# **Safe Routes to School Pop-Up Projects**

*Temporary traffic calming or  
infrastructure installations that make  
it easier and safer for kids to walk  
and bike to school*



# Engineering

- Pop-up projects demonstrate the **value** of and **potential** for improvements to street features or infrastructure.





# Encouragement

- By designing colorful, attractive, unique popup demonstrations and conducting robust community outreach, pop-up Safe Routes to School projects can encourage people to get out and walk or bicycle to see and try out the temporary infrastructure.



# Education

- Developing pop-up projects provides an opportunity to teach kids and parents about traffic safety when seeking their input on what would make it easier and safer to walk and bike to school.
- Once the pop-up is installed, there's an opportunity to teach students how to take advantage of the new and improved infrastructure to walk or bicycle to school safely.



# Evaluation

- Pop-up Safe Routes to School projects create a time and place to gather data on travel mode, traffic speed, and feedback on the installation in order to make the case for permanent infrastructure investments.



# Equity

- Through meaningful community engagement, traffic safety improvements can reflect the needs and desires of the community.
- Pop-up projects can catalyze traffic safety improvements in places that need them most.



Safe Routes  
to School  
**National  
Partnership**



# The benefits of Safe Routes to School Pop-Up Projects

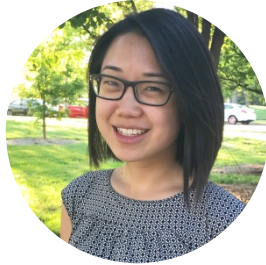
*Inexpensive*

*Flexible*

*Engaging*

*Help make the case*

# QUESTIONS?



**Grace Kyung**  
Special Projects Director  
Trailnet



**Jeff Knowles**  
Associate Planner  
Alta Planning + Design



**Marisa Jones**  
Healthy Communities  
Manager  
Safe Routes to School  
National Partnership

# Please take our survey!



Safe Routes  
to School  
**National  
Partnership**

# Thank you!

