

# Supporting Denver's Policy on Equity Through Effective Community Engagement in Safe Routes to School







Lisa Diaz, MPH  
Denver Safe  
Routes to School  
Administrator

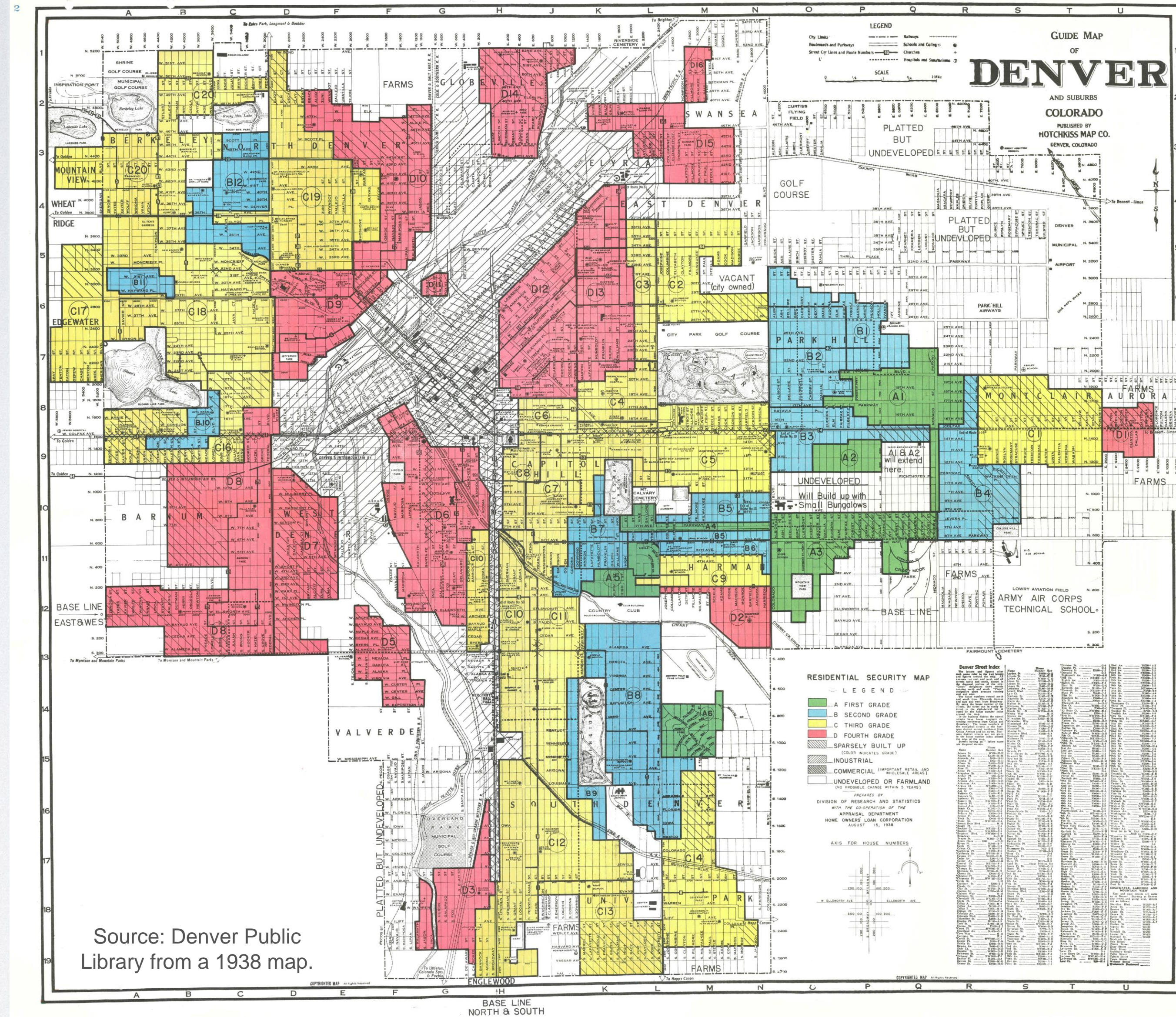
Me: Department of Transportation and Infrastructure (DOTI), formerly Denver Public Works.

Until January, with Denver Department of Public Health and Environment (DDPHE). In January, moved to DOTI.

Leadership recognized the importance of the intersection of Public Health with Transportation and Infrastructure.



In the beginning (well, in 1938 Denver), there was redlining



Source: Denver Public Library from a 1938 map.



# Equity as Policy from City Leadership

## Denver Mayor Michael Hancock launches 'equity movement' during State of the City Speech



Copyright 2018 Scripps Media, Inc. All rights reserved. This material may not be published, broadcast, rewritten, or redistributed.



By: Robert Garrison

Posted at 3:45 PM, Jul 16, 2018 and last updated 4:58 PM, Jul 22, 2018

DENVER — The mayor declared that Denver was at a “transformational moment in our history” before he laid out his plan to meet some the biggest challenges facing the city in his 2018 State of the City Address Monday.

## Mayor Hancock Doubles Down on Equity Platform

Sep 13, 2018

→ 2019 Budget Reflects Equity, Access, Affordability and Neighborhood Preservation

DENVER — This morning, Mayor Michael B. Hancock submitted his **2019 spending plan** to City Council, a \$1.46 billion budget that sets a record for affordable-housing funding, will help preserve neighborhood character and allows the city to keep pace with the ongoing demands of a growing population.

The proposed budget will advance Mayor Hancock’s Equity Platform, unveiled during his State of the City Address in July, to connect more people in more neighborhoods to the unprecedented economic opportunities Denver is enjoying today.

The budget also will fund many other high-priority needs, such as offering more mobility options and

DP Denver mayor pitches November vote on new...



POLITICS > DENVER POLITICS

## Mayor Michael Hancock pitches November vote on new Denver department promoting “transportation equity” ←

Reorganized public works department is giving new focus to transit, bike and pedestrian mobility options



# Equity as a Policy in our Comprehensive Plan

**DENVER** THE MILE HIGH CITY Comprehensive Plan 2040

INTRODUCTION EQUITABLE STRONG CONNECTED VIBRANT RESILIENT HEALTHY Download the plan

The plan outlines **nine goals** supported by key actions we can take **to reduce inequity and improve affordability:**

1. Ensure all Denver residents have safe, convenient and affordable access to basic services and a variety of amenities.
2. Support housing as a continuum to serve residents across a range of incomes, ages and needs.
3. Develop housing that is affordable to residents of all income levels.
4. Preserve existing affordable housing.
5. Reduce the involuntary displacement of residents and businesses.
6. Integrate equity considerations into city policies, processes and plans.
7. Make neighborhoods accessible to people of all ages and abilities.
8. **Increase housing options for Denver's most vulnerable populations.**
9. Improve equitable access to quality education and lifelong learning opportunities.

For our strategies to achieve these goals, read [pages 28-31](#) of Comprehensive Plan 2040.



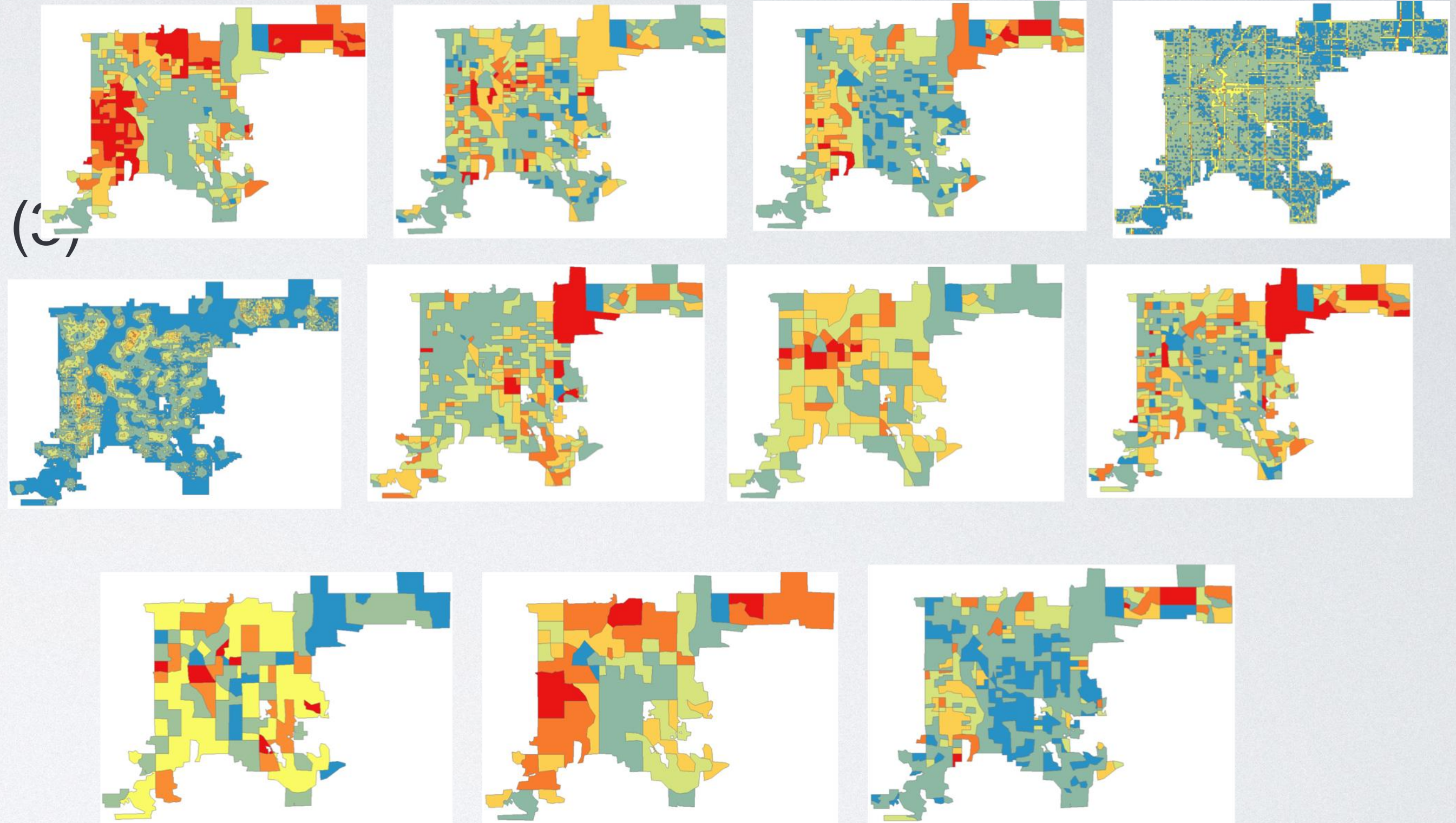
# Equity Index Scoring

The GIS based equity index was developed to provide a spatial reference used to supplement project prioritization and development. The data layer identifies areas of need using variables determined to be critical for locating transportation related projects in an equitable manner.



# Equity Index Variables

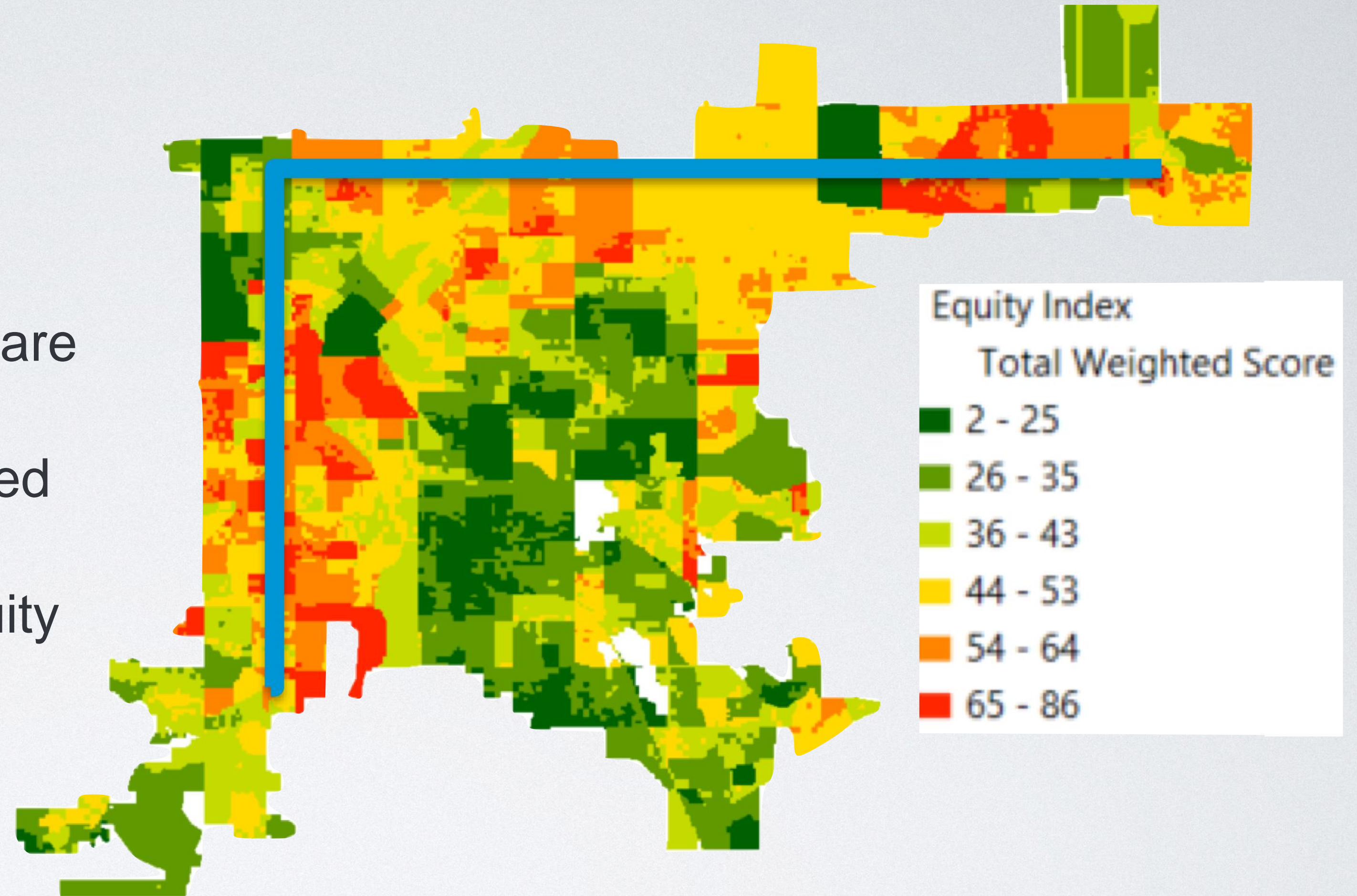
- Percentage of Minority Populations (3)
- Households with Poverty Level Income (3)
- Education less than HS Equivalent (2)
- Traffic Safety (2)
- Key Destinations and Children (2)
- Populations Age 65+ (2)
- Households with no vehicle (2)
- Female Heads of Household (2)
- Disabled Populations (2)
- Health model (1)
- Language Challenged Populations (1)





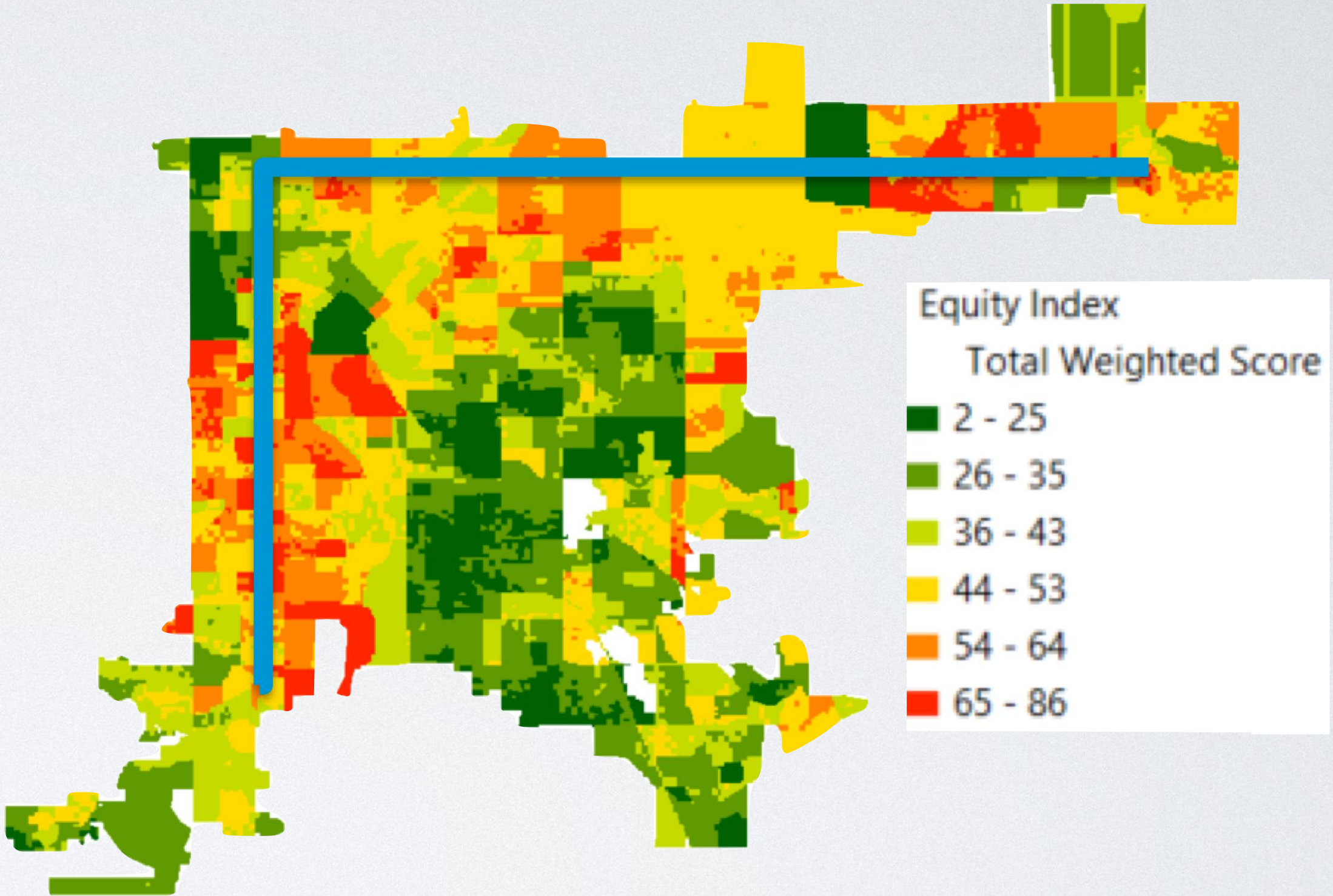
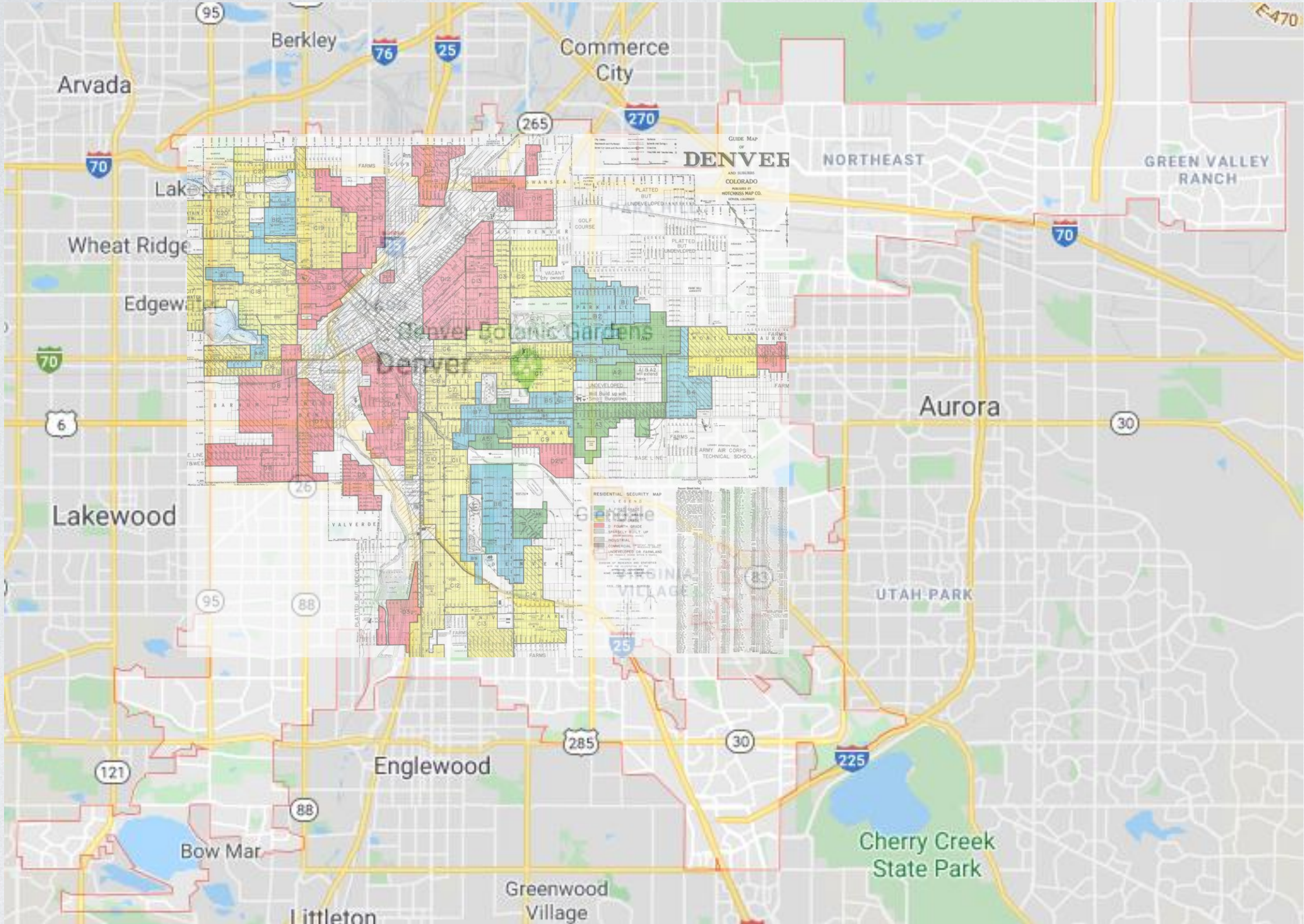
# Equity Index Output

- Citywide Mean = 44
- Areas with a score of 44 or higher are considered Areas of Need
- 49% of city area within Area of Need (does not include DIA)
- Aligns with other departments' equity models (inverted L)



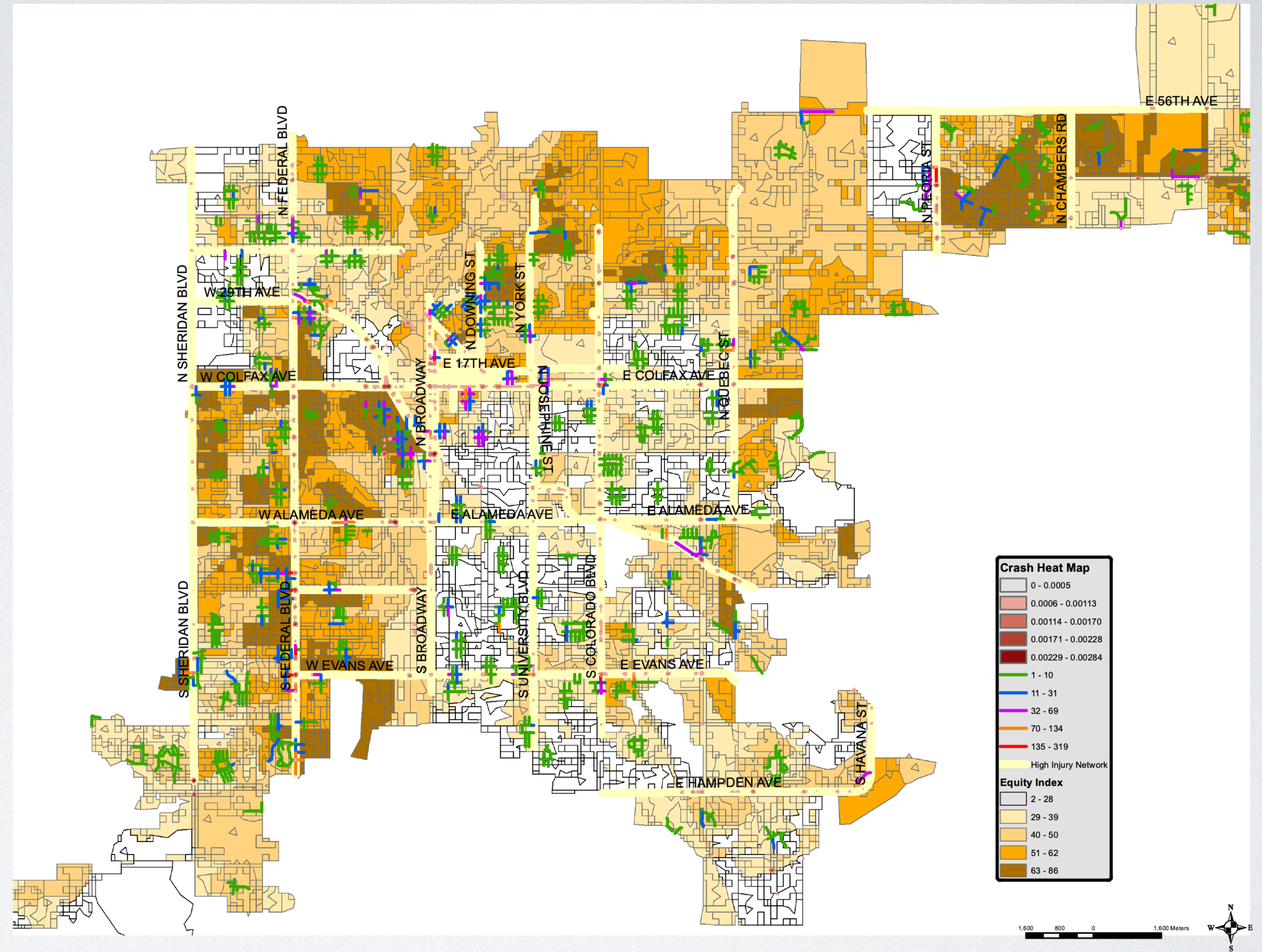


# Why the Equity Index Score is Relevant





# Applying EI Scores to Other Data





Equity in our work is a Denver policy.

Understanding the needs of all informs how we can do this successfully.

How we engage to understand those needs influences our ability to ensure equity.

Listen

Be honest

When unsure, under-commit

Over deliver

Know the history.

Care

Ask, "What's it like to be you?"

Find a solution that works.

Be honest and explain why when the answer is "no."



# Engagement Spectrum and Some SRTS Examples

Inform	Consult	Involve	Collaborate	Empower
Safety demonstrations Program introductions	311 requests School transportation observations Baseline counts	Community story mapping events School safety day trainings at school	Safe drop off planning with community Adverse event response	School community coalitions (new) SRTS Teacher Champion program

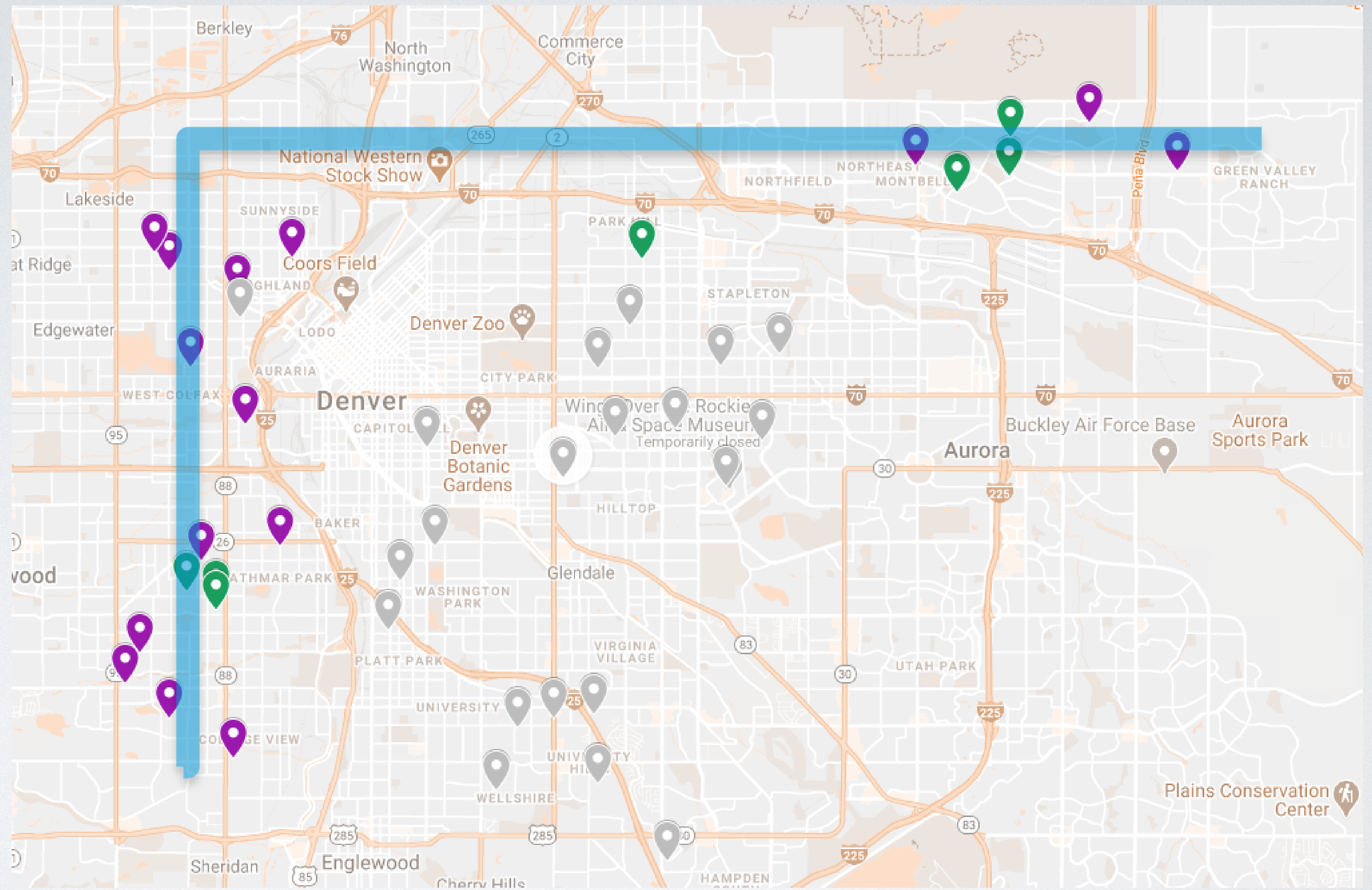


# 10 Step Tier 1 Priority Support





How does this relate to equity?





# Examples of projects



**Traffic calming improvements. Plans in process.**

**A school-wide safety day.**

**A safe drop off plan built through community collaboration to design the solution.**



# Questions?

Lisa Diaz, MPH  
Lisa.Diaz@denvergov.org