



Taking on Traffic Laws: A How-To Guide for Decriminalizing Mobility
Safe Routes Partnership and BikeWalkKC
Wednesday, April 20th, 2022



MISSION

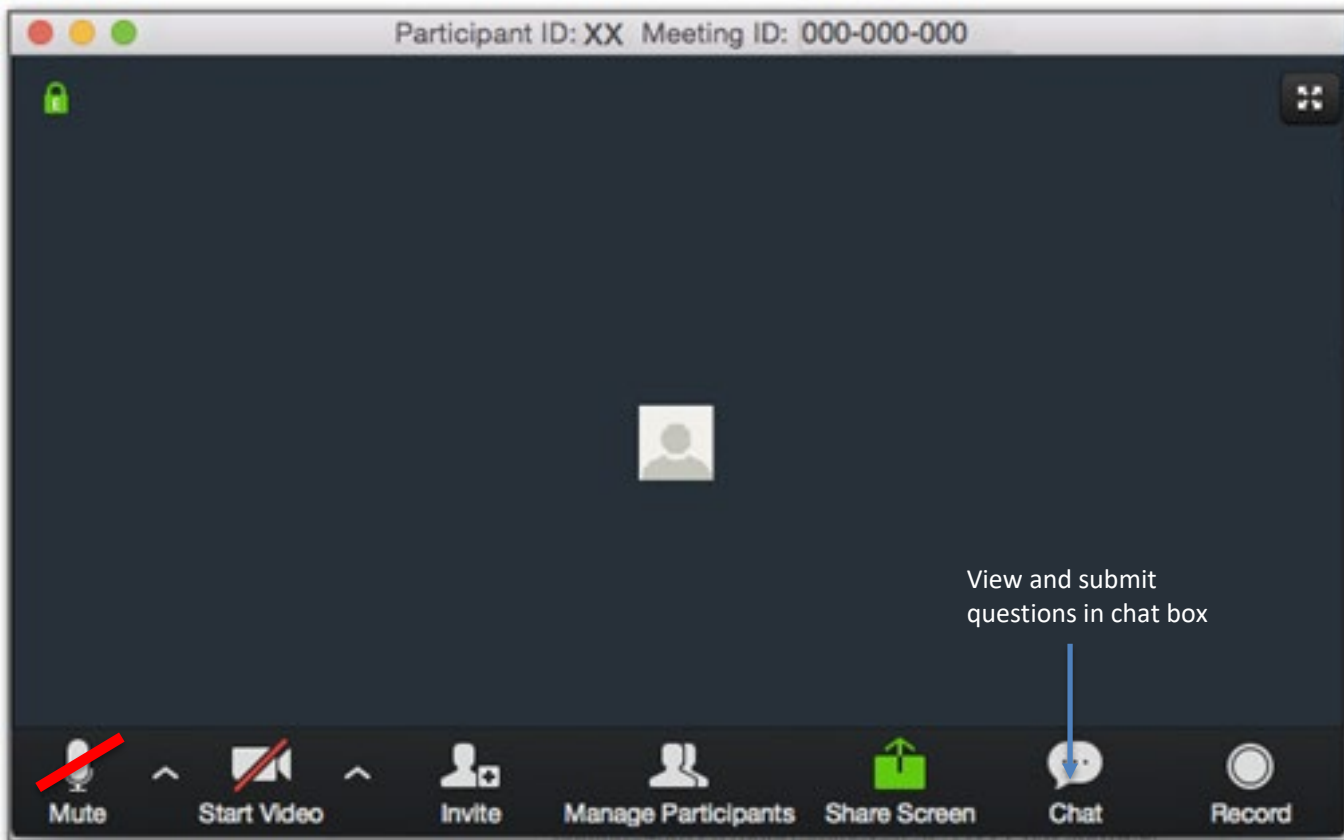
The mission of the Safe Routes Partnership is to advance safe walking and rolling to and from schools and in everyday life, improving the health and well-being of people of all races, income levels, and abilities, and building healthy, thriving communities for everyone.



BIKE
WALK 

MISSION

Our mission is to redefine our streets as places for people to build a culture of active living



OPENING PRESENTATION IS BEING RECORDED
PLEASE PARTICIPATE IN THE CHAT!



Agenda

- Opening framing – Safe Routes Partnership
- BikeWalkKC Presentation
- Q&A
- Breakout Group Discussion
- Wrap-Up



Poll

Where is your organization/community in the process of working toward repealing or modifying traffic laws related to walking and bicycling?



- Removed Enforcement from 6 E's Framework of Safe Routes to School and invested in building out tools and resources to support communities to do the same
- Collaboration with BikeWalkKC is a result of that investment
- Focus today on Evaluation, Engagement, and Equity as we re-imagine and work toward safer, more connected, and equitable places



EVALUATION

Assessing which approaches are more or less successful, ensuring that programs and initiatives are supporting equitable outcomes, and identifying unintended consequences or opportunities to improve the effectiveness of each approach



EQUITY

Ensuring that Safe Routes to School initiatives are benefiting all demographic groups, with particular attention to ensuring safe, healthy, and fair outcomes for low-income students, students of color, students of all genders, students with disabilities, and others.



ENGINEERING

Creating physical improvements to streets and neighborhoods that make walking and bicycling safer, more comfortable, and more convenient.



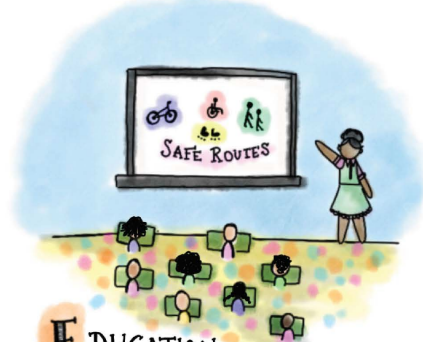
ENCOURAGEMENT

Generating enthusiasm and increased walking and bicycling for students through events, activities & programs



ENGAGEMENT

All Safe Routes to School initiatives should begin by listening to students, families, teachers, and school leaders and working with existing community organizations, and build intentional, ongoing engagement opportunities into the program structure.



EDUCATION

Providing students and the community with the skills to walk and bicycle safely, educating them about the benefits of walking and bicycling, and teaching them about the broad range of transportation choices



Evaluating Efficacy of Interventions

- If our goal is to keep people safe*, we need to evaluate what's working and what's not
- We evaluate engineering countermeasures and educational curricula; we need to apply the same openness to learning and change to enforcement

**Safety means*

- Not injured or killed as a result of traffic violence
- Not bullied or harassed
- Not victim to physical violence, threats, or intimidation

and

People can move throughout communities in their full expression of selves.



Research shows that Black people are most often stopped for traffic violations related to walking and biking

BREAKING NEWS NEWS

'Biking while black': Chicago minority areas see the most bike tickets

By MARY WISNIEWSKI
CHICAGO TRIBUNE | MAR 17, 2017 AT 2:18 PM

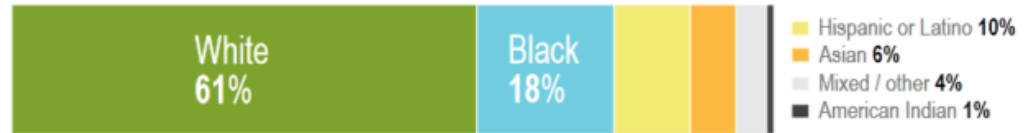


Racial Justice

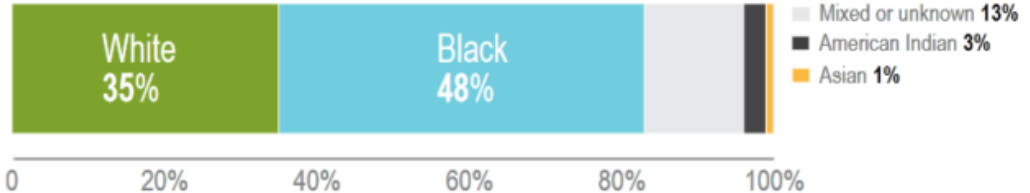
Health Care

Techn

Race and ethnicity of Minneapolis residents in 2014



Race and ethnicity of people in bike-related CAPRS reports 2009-2015



Source: Bicycle Citations and Related Arrests in Minneapolis 2009-2015

WALKING WHILE BLACK

Pedestrian Enforcement and Racial Profiling

People of color bear a disproportionate burden of traffic violations



There is a relationship between lack of supportive infrastructure and police enforcement

Individuals are being cited and fined for the public sector's failure to create safe places for people to move throughout their communities.



Transportation Research Part D: Transport and Environment

Volume 99, October 2021, 103027



Biking where Black: Connecting transportation planning and infrastructure to disproportionate policing

Jesus M. Barajas



Bicycle and pedestrian traffic stops can escalate with deadly consequences

CityLab
Justice

An Alleged Bike Violation Brings on a Police Shooting of a Black Man

The killing of Dijon Kizzee by Los Angeles Sheriff's deputies has sparked protests and outrage over how traffic safety policies can fuel police violence.

<https://www.bloomberg.com/news/articles/2020-09-02/police-shooting-of-l-a-bicyclist-sparks-outrage>

NATIONAL

A deputy fatally shot a Black homeless man during a jaywalking stop. He won't face charges.



By [Kim Bellware](#)

February 12, 2022 at 4:46 p.m. EST

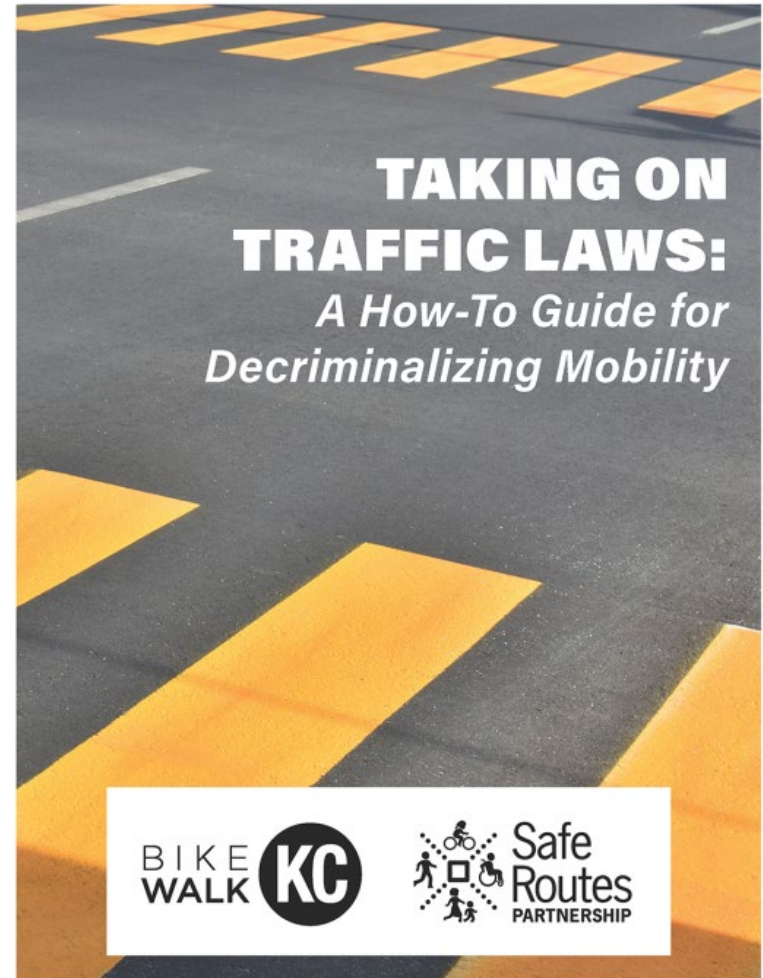
<https://www.washingtonpost.com/nation/2022/02/12/kurt-reinhold-orange-county-homeless/>



Taking on Traffic Laws



Michael Kelley

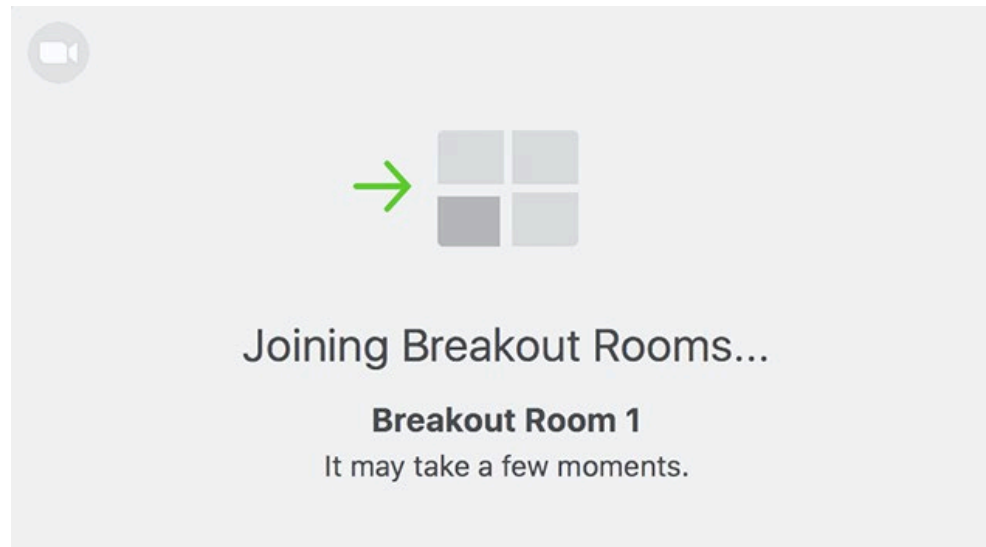




Discussion Breakouts

- Please feel free to come off video, share by speaking, or by using the chat
- This is deeply personal work – there is no pressure to share personal experiences
- This is a learning space – we acknowledge that there can be fear about saying the wrong thing and encourage everyone to create discussion spaces that enable people to learn from and with one another

<https://tinyurl.com/45d2scy6>



- You will automatically be placed in a breakout room for a small group discussions.
- The chat function will work for your breakout group. If you have a question, you can press the "Ask for Help" button.
- If you get kicked out of the group, you will return to the main meeting room. A facilitator can place you back in your group.
- We will broadcast time reminders and give a one-minute warning to wrap up conversations.
- Breakout rooms will close automatically and you will return to the main meeting room.