

# play

# all

# day

SCHOOL

CITY PARK

PARK  
1/2 MI

SCHOOL

CITY PARK

A

road

map

to

new

use

joint

parks



# play all day PARKS PROGRAM

The Play All Day Parks Program is a new initiative put forth by the City of San Diego Mayor's Office and the Superintendent of the San Diego Unified School District in 2016 to break ground on over 30 new joint-use park sites in the next 5 years.



## VISION

To create public recreation opportunities in San Diego neighborhoods through a joint-use partnership between the San Diego Unified School District and the City of San Diego.

Over  
30 new  
joint-use  
park sites



## CITY AND SCHOOLS WORKING TOGETHER

The commitment to build 30 new joint-use parks is an ambitious goal made possible by strong collaboration between San Diego Unified and the City of San Diego to expand recreational opportunities. The initiative strengthens the long-standing partnership between the City and San Diego Unified to maximize shared use of public facilities and resources for educational and community use. The new park facilities will be opened on existing school sites and constructed with Proposition Z bond funding. The City will commit to operate and maintain the new park facilities.

## PURPOSE

Creative and innovative measures like the Play All Day partnership are essential in order to expand the current park and recreation system.

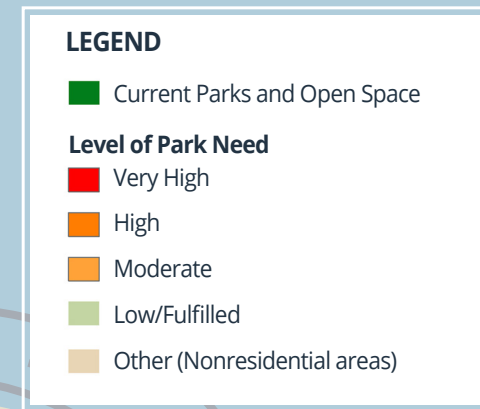
The City of San Diego has an extensive park system with over 41,000 acres of parkland, and is home to some of the largest and most unique parks in the country. Millions of residents and tourists visit our parks each year.

Research shows that people receive the most benefit from local parks and open space that are in close proximity to their homes. According to the Trust for Public Land, 23% of the population in San Diego currently live further than a 10-minute walk to a park or recreational facility.

Walkable parks and open space strengthen our communities, improve physical and psychological health, and make communities and neighborhoods more attractive places to live and work. One of the biggest challenges San Diego faces in building new parks is the limited amount of available land.

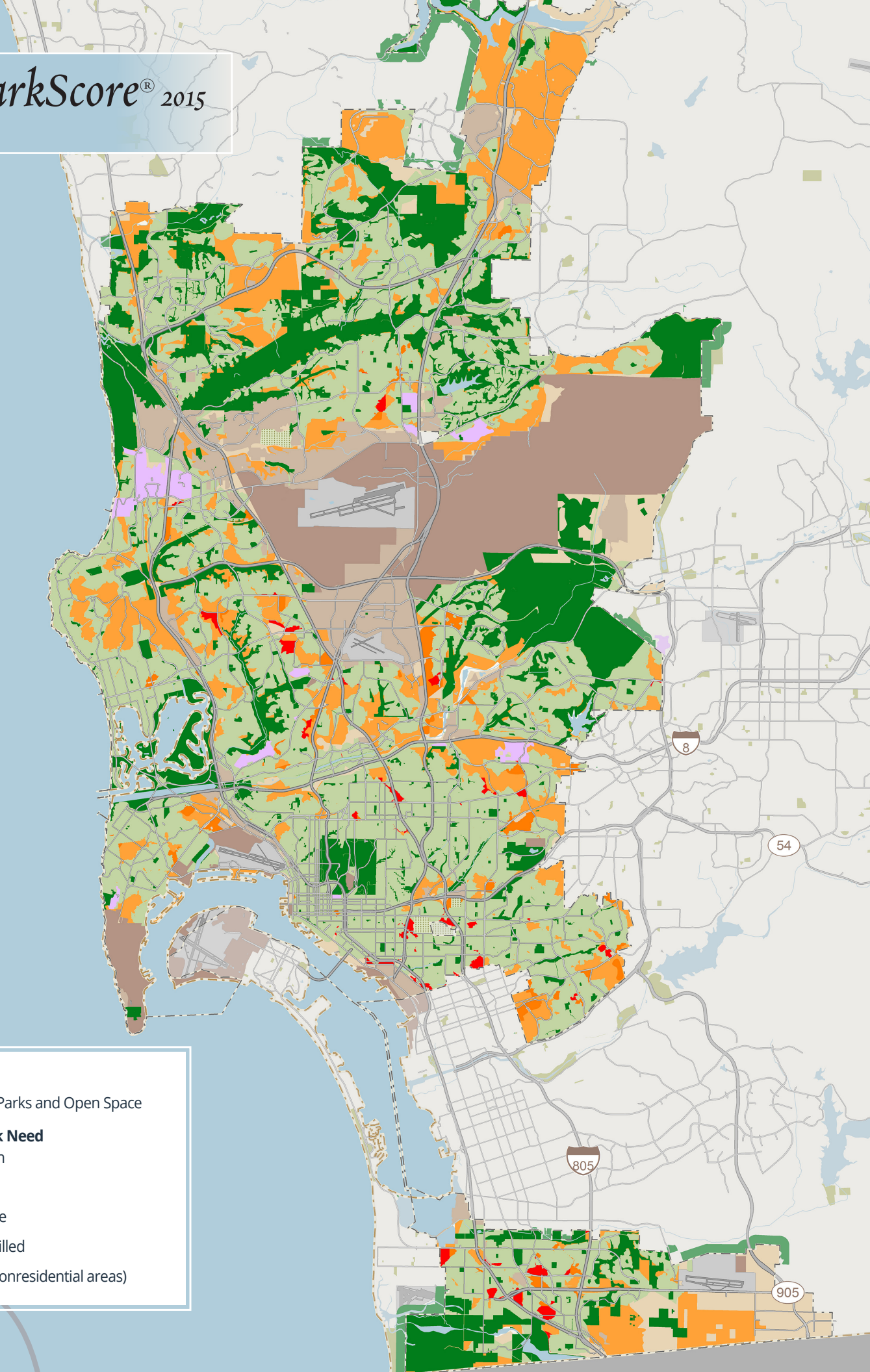


THE TRUST FOR PUBLIC LAND  
**ParkScore**® 2015



**Joint-use partnerships with schools fill an essential gap in addressing the City's need for more park land and additional recreational opportunities in our communities.**

**23% of San Diego residents currently live further than 10-minute walk to a park or green space.**



## BENEFITS

Designating school sites for community recreational use during non-school hours increases access to recreational opportunities.

Schools are the center point of the communities that surround them. Children participate in physical education and recreational activities in school yards during school hours, but there are opportunities for community use when school isn't in session.

Agencies and governments across the country are identifying joint-use school sites as opportunities in our communities. The benefits include:

### Provide a place for physical activity

Strong evidence shows that when people have nearby access to parks, they exercise more. Regular **physical activity** has been shown to increase health and reduce the risk of a wide range of diseases, including heart disease, hypertension, colon cancer and diabetes. Physical activity also relieves symptoms of depression and anxiety, improves moods, and enhances psychological well-being.



The more active children are, the healthier they will be now and when they grow up.



### Provide environmental benefits

Trees and other vegetation in parks reduce air and water pollution, help keep cities cooler and are a cost-effective way to manage storm water runoff. **Environmental benefits** include ground water recharge areas, storm water protection, reductions in heat island effects, and increased carbon uptake from trees and vegetation. Turf fields allow for water recharge into native soils and can provide a filtering effect for storm water pollutants.

### Produce opportunities for social and community interactions.

Parks produce important **social and community benefits**. They make urban neighborhoods more livable, offer recreational opportunities for at-risk youth, children and families, and provide places in neighborhoods where people can feel a sense of community. Access to public parks and recreational facilities has been strongly linked to reductions in crime and, in particular, to reduced juvenile delinquency.



## WHAT IS JOINT-USE?

Joint-use is when school property is utilized for public use when school is not in session. Currently, San Diego maintains 76 joint-use facilities in partnership with San Diego Unified School District and there are another 32 joint-use parks planned for the future.

The City of San Diego and San Diego Unified entered into their first joint-use agreement in 1948.

The Play All Day joint-use parks will include a turfed multi-purpose field and a walking track. Most of the joint-use parks will also include paved hardcourts, playground equipment and off-street parking. Each school site is unique and has different constraints and opportunities.

**In 1948  
the first  
joint-use park  
in San Diego  
was  
established.**

## FUNDING OPPORTUNITIES

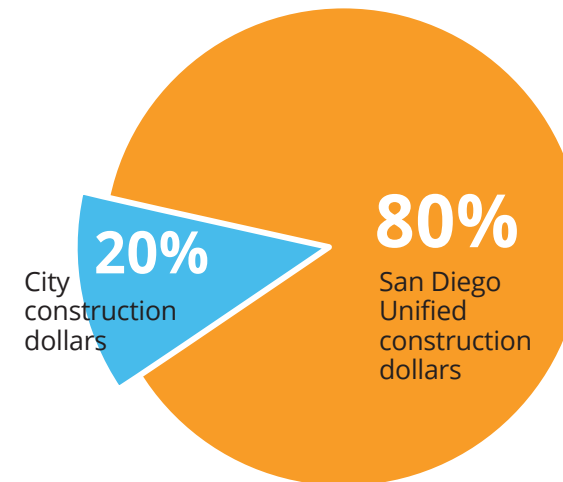
Proposition Z, approved by San Diego voters in 2012, is one of the San Diego Unified's bond measures that created funding for capital improvement projects to repair, renovate and revitalize school sites.

San Diego Unified is using a portion of these funds to construct new turf fields at district schools that do not already have turf fields.

At the present time, the district has a unique opportunity to partner with the city to produce joint-use turf fields utilizing Prop. Z funds.

Other joint-use sites are being funded with Development Impact Fees collected in specific communities by the City.

### FUNDING SOURCES FOR IDENTIFIED PLAY ALL DAY PARKS



\* The City will agree to maintain and operate new joint-use facilities.

**The City  
is partnering  
with San Diego  
Unified to use  
Prop Z funds  
to develop  
joint-use  
fields.**

## GUIDING PRINCIPLES FOR PARK SELECTION

Each joint-use park site is unique and has been evaluated based on the specific merits of the site. The following guiding principles are taken into account in the selection of joint-use park sites.

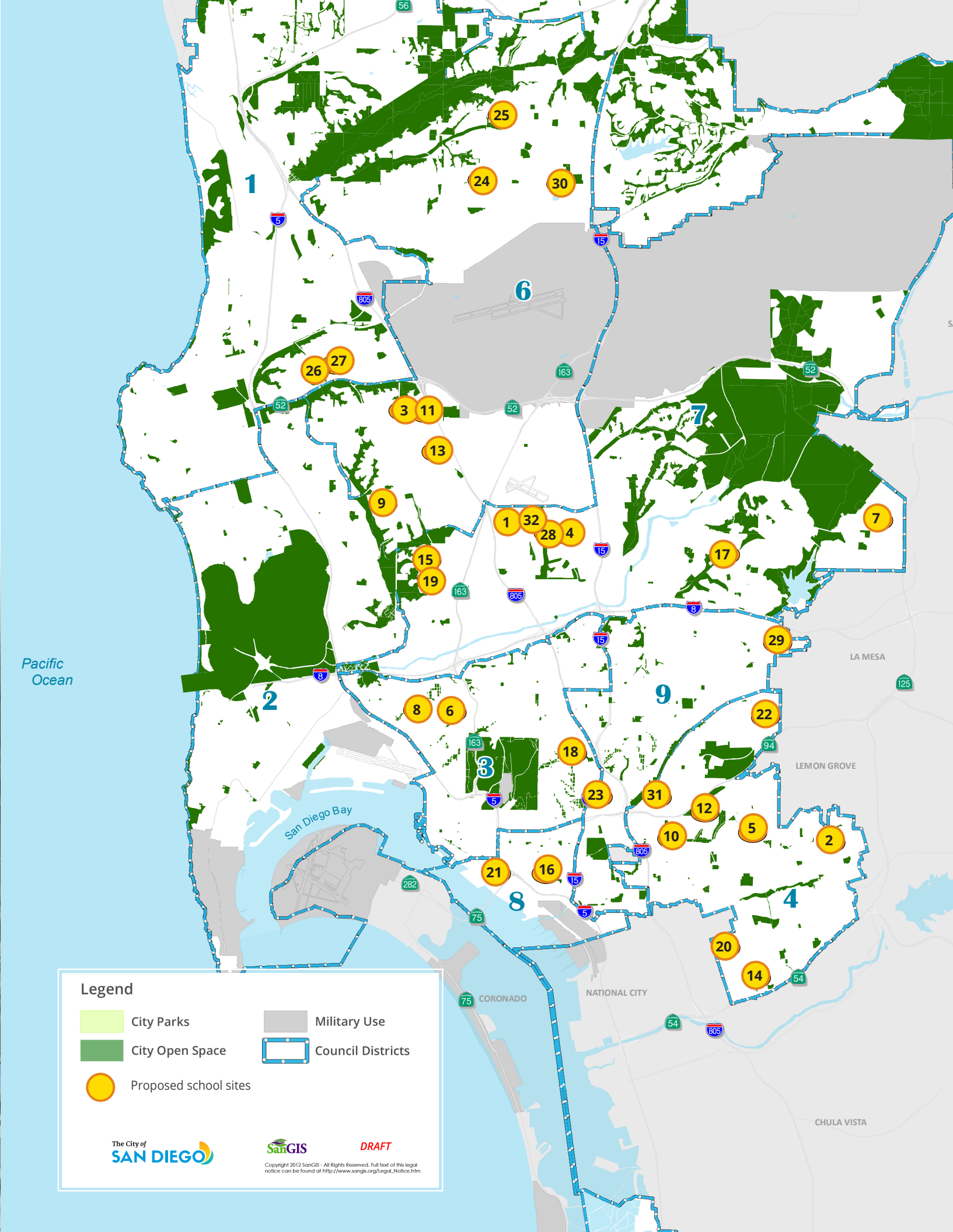
- Located in park-deficient communities
- Funding source available (Prop Z or City funds)
- Access to hard courts and play equipment
- Increase recreation opportunities when adjacent to public parks
- Available parking for joint-use park users
- Visibility from streets



SCHOOL

# PROPOSED PLAY ALL DAY

School	Community	School	Community
1 Angier Elementary	Serra Mesa	17 Marvin Elementary	Navajo
2 Audubon Elementary	Skyline-Paradise Hills	18 McKinley Elementary	North Park
3 CPMA Middle	Clairemont Mesa	19 Montgomery Middle	Linda Vista
4 Cubberley Elementary	Serra Mesa	20 Paradise Hills Elementary	Skyline-Paradise Hills
5 Encanto Elementary	Encanto	21 Perkins Elementary	Barrio Logan
6 Florence Elementary	Uptown	22 Rolando Park Elementary	Eastern
7 Gage Elementary	Navajo	23 Rowan Elementary	City Heights
8 Grant K-8	Uptown	24 Salk Elementary	Mira Mesa
9 Holmes Elementary	Clairemont Mesa	25 Sandburg Elementary	Mira Mesa
10 Horton Elementary	Encanto	26 Spreckels Elementary	University City
11 Innovation Middle	Clairemont Mesa	27 Standley Middle	University City
12 Johnson Elementary	Southeastern	28 Taft Middle	Serra Mesa
13 Lafayette Elementary	Clairemont Mesa	29 Tubman Elementary	College Area
14 Lee Elementary	Skyline-Paradise Hills	30 Wangenheim Elementary	Mira Mesa
15 Linda Vista Elementary	Linda Vista	31 Webster Elementary	Eastern
16 Logan K-8	Southeastern	32 Wegeforth Elementary	Serra Mesa



# CONCLUSION

With a partnership between the City and San Diego Unified, San Diego can maximize public resources, employ efficient land-use strategies and rapidly increase the amount of park land available for public use and enjoyment.

Joint-use agreements are a win-win-win opportunity for all. San Diego Unified retains the land and receives assistance maintaining their joint-use sites, the City secures additional park land and park sites, and the public has better access and more opportunity to enjoy and participate in recreational opportunities in their neighborhoods.

Working together, we can provide a place for physical activity, increase the value of neighborhood residential property, provide environmental benefits, and create places where community members can develop social ties, share experiences, and build community bonds.



**Joint-use agreements are a win-win-win opportunity for all.**

