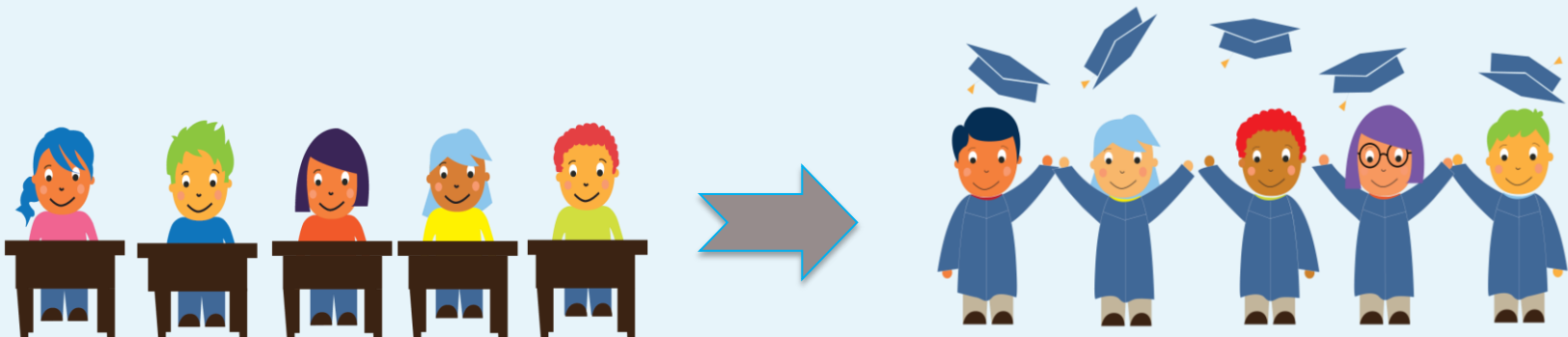


# Reducing Chronic Absence

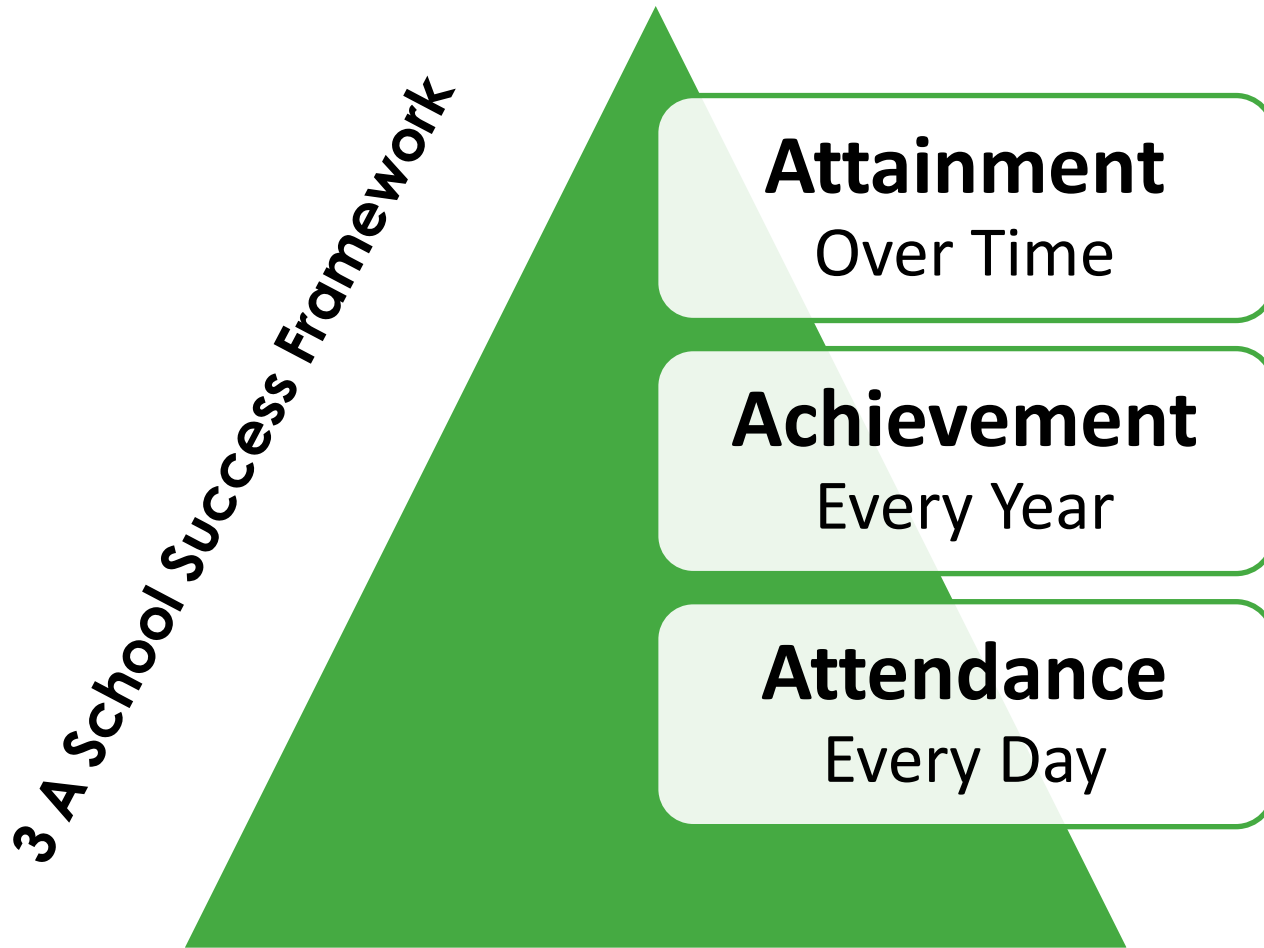
## *Why It Matters?*

*How It Fits with A Tiered Approach to Intervention.*

*How poor transportation contributes to chronic absence.*



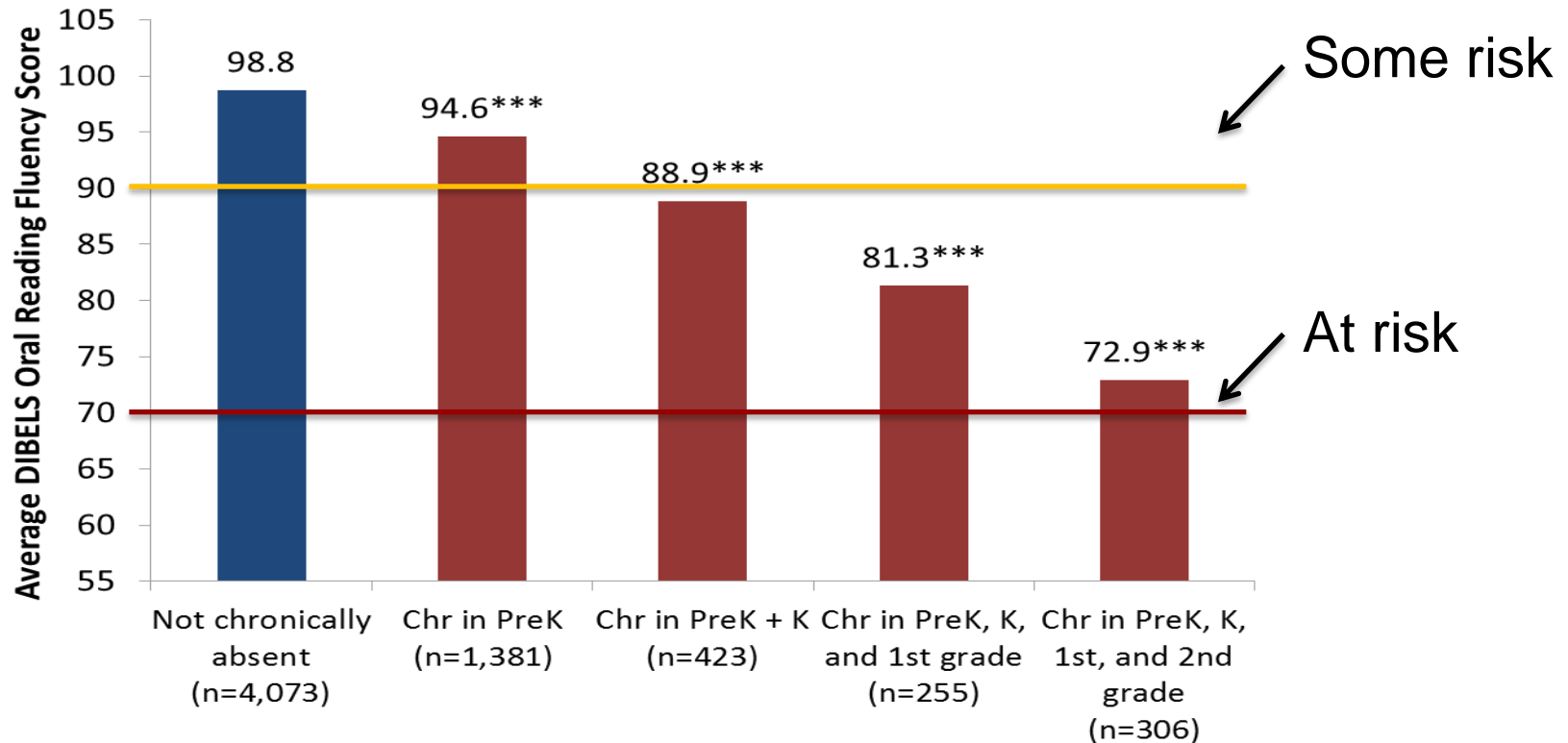
# Attendance is an Essential Ingredient of Academic Success



Developed by Annie E. Casey Foundation & America's Promise Alliance  
For more info go to [www.americaspromise.org/parentengagement](http://www.americaspromise.org/parentengagement)



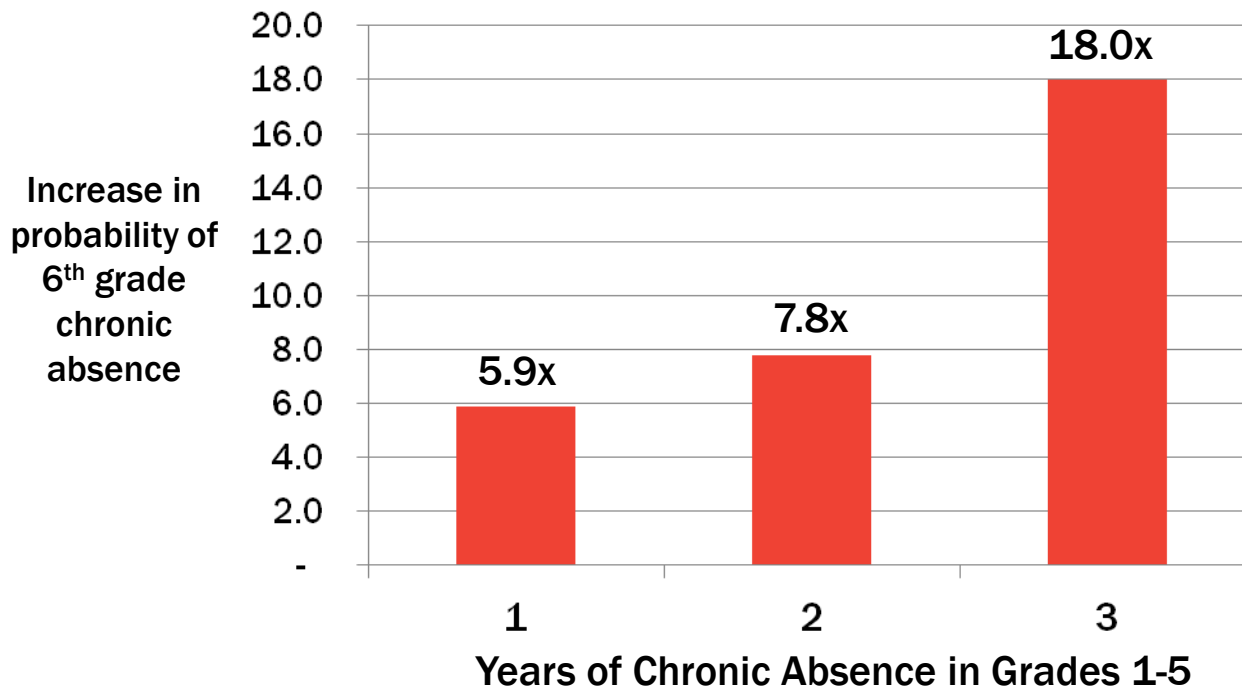
# Starting in PreK, More Years of Chronic Absence = Need for Intensive Reading Support By 2<sup>nd</sup> Grade



\* Indicates that scores are significantly different from scores of students who are never chronically absent, at  $p < .05$  level; \*\* $p < .01$ ; \*\*\* $p < .001$

# Multiple Years of Elementary Chronic Absence = Worse Middle School Outcomes

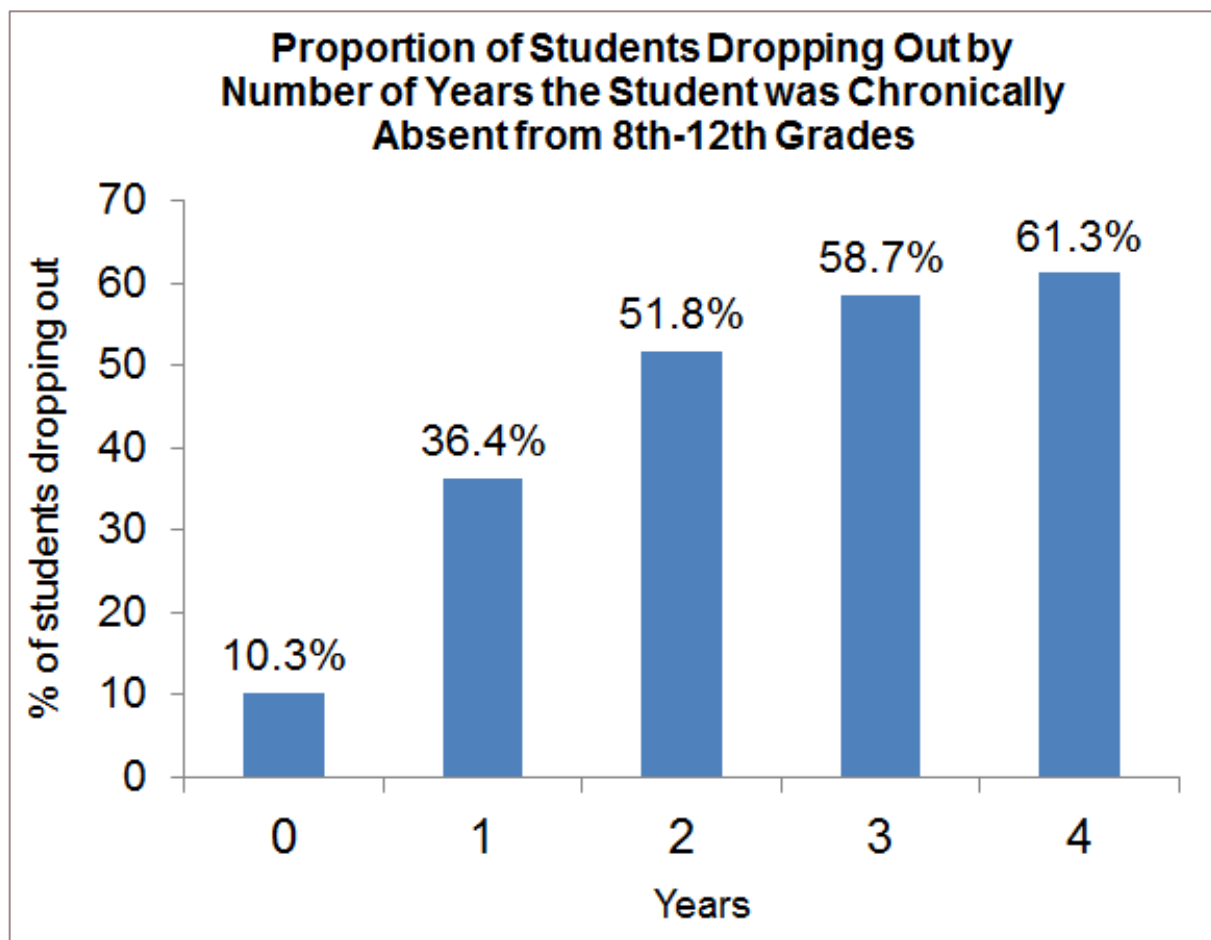
Each year of chronic absence in elementary school is associated with a substantially higher probability of chronic absence in 6<sup>th</sup> grade



Chronic absence in 1<sup>st</sup> grade is also associated with:

- Lower 6<sup>th</sup> grade test scores
- Higher levels of suspension

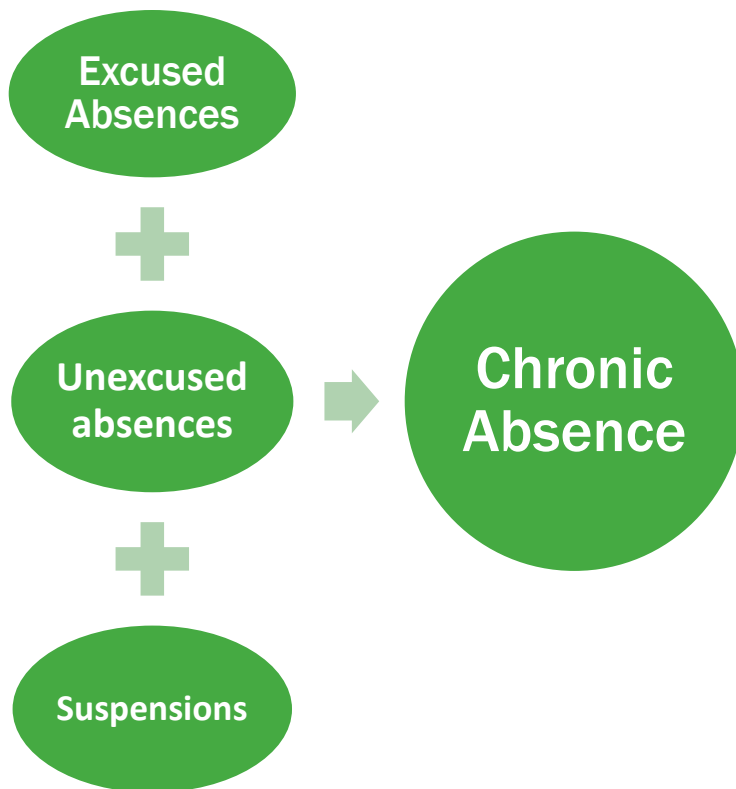
# The Effects of Chronic Absence on Dropout Rates Are Cumulative



With every year of chronic absenteeism, a higher percentage of students dropped out of school.

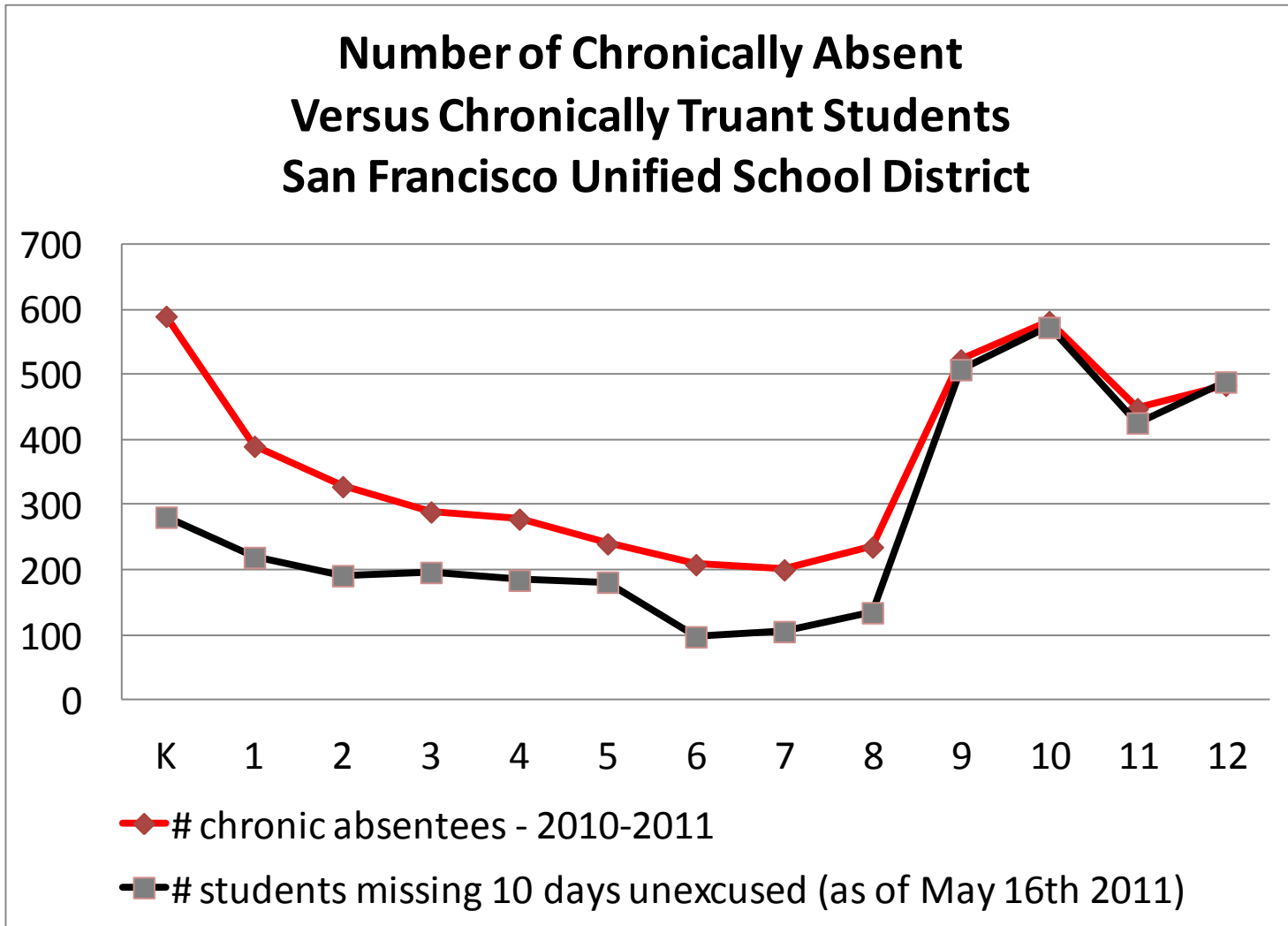
# What is Chronic Absence?

Chronic absence = missing 10% or more of school for any reason.



Chronic absence is different from truancy (unexcused absences only) or average daily attendance (how many students show up to school each day).

# Truancy (unexcused absences) Can Also Mask Chronic Absence



# Reducing chronic absence requires a tiered approach that begins with prevention

## TIER 3

Students who missed 20% or more of the prior school year (severe chronic absence)

- Intensive case management with coordination of public agency and legal response as needed

High  
Cost

## TIER 2

Students exhibiting chronic absence (missing 10%)

- Provide personalized early outreach
- Meet with student/family to develop plan
  - Offer attendance Mentor/Buddy

## TIER 1

All students at priority schools

- Recognize good and improved attendance
- Educate & engage students and families
  - Monitor attendance data
- Clarify attendance expectations and goals
- Establish positive and engaging school climate
- Provide functioning supportive systems (i.e. transportation, health, etc.)

Low  
Cost

Transportation





# Find Out Why Students Are Chronically Absent at the Individual and Group Level

## Myths

Absences are only a problem if they are unexcused

Sporadic versus consecutive absences aren't a problem

Attendance only matters in the older grades

## Barriers

Chronic disease

Lack of access to health or dental care

Poor transportation

No safe path to school

## Aversion

Child struggling academically

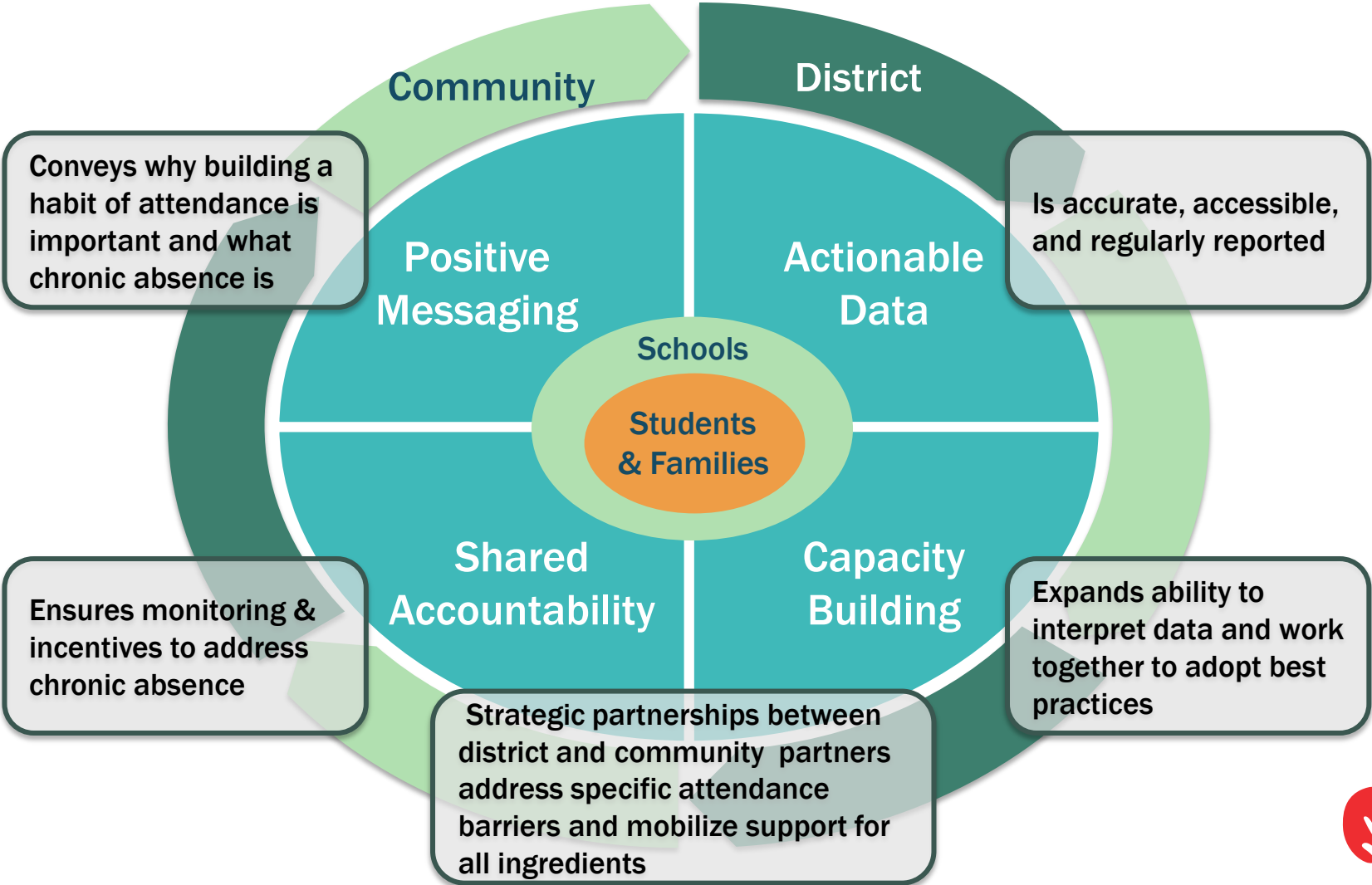
Lack of engaging instruction

Poor school climate and ineffective school discipline

Parents had negative school experience



# Sustainable District-wide Reductions Supported by These Recommended Strategies



# Often cited transportation barriers

- Missed the bus and school is a long distance away
- The walking pathway is dangerous
- Parent/Guardian too ill to walk a child to school
- The public transportation is too expensive or unsafe
- Public transportation staff treat students inappropriately



# Solutions

- Partnering with Safe Routes National Partnership, and others on the panel to describe ways in which these barriers can be addressed

