



Metro

A wide-angle photograph of Portland, Oregon, showing a dense urban area with numerous skyscrapers in the foreground and a large, snow-capped mountain (Mount Hood) in the background under a clear blue sky. The foreground is partially obscured by green evergreen trees on the left side.

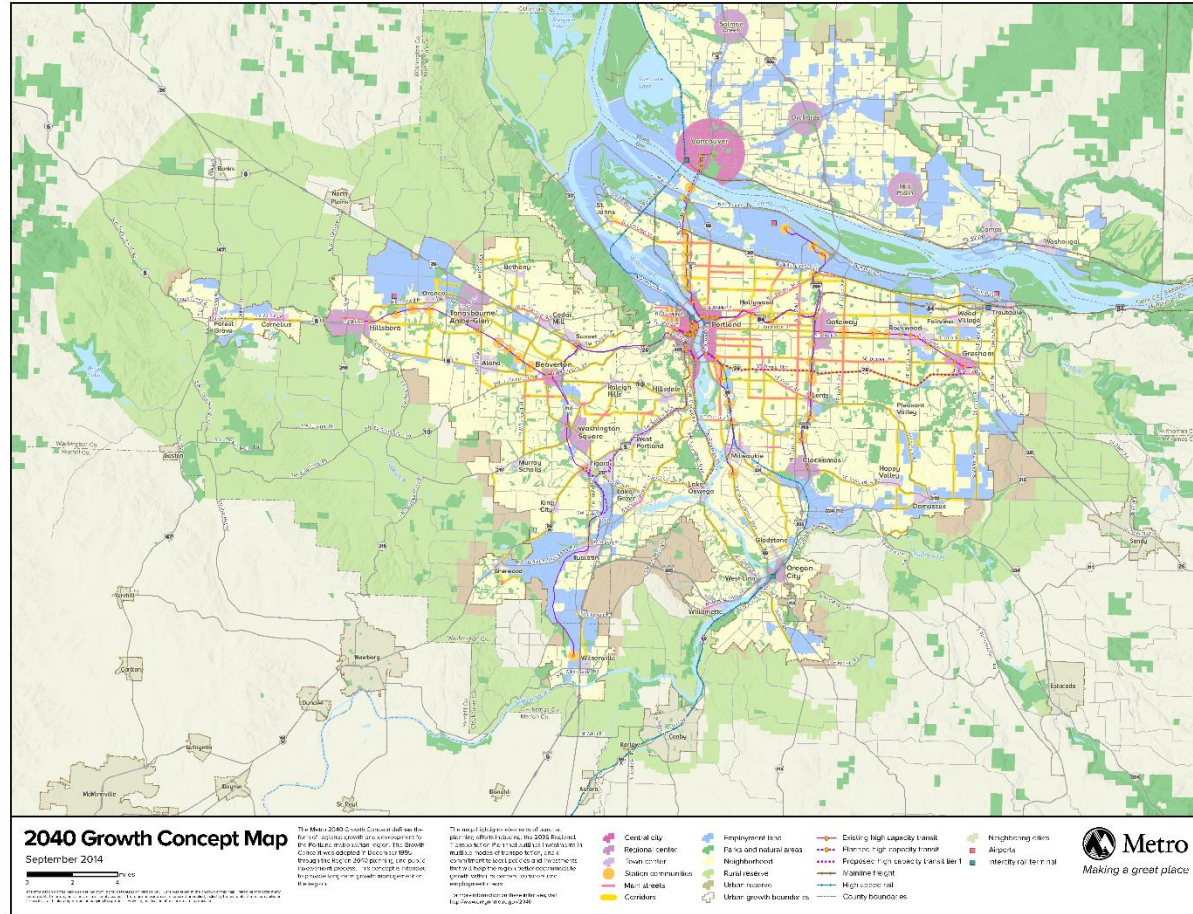
**EMBEDDING EQUITY INTO THE REGIONAL  
TRANSPORTATION BLUEPRINT**  
October 10, 2019 | Grace Cho, Transportation Planner

# Portland Metropolitan Region

- 23 cities, 3 counties
- 1.6 million (OR side)
- 260,000 acres
- Bi-state MPO
- Elected regional gov't
- 2040 Growth Concept

AND

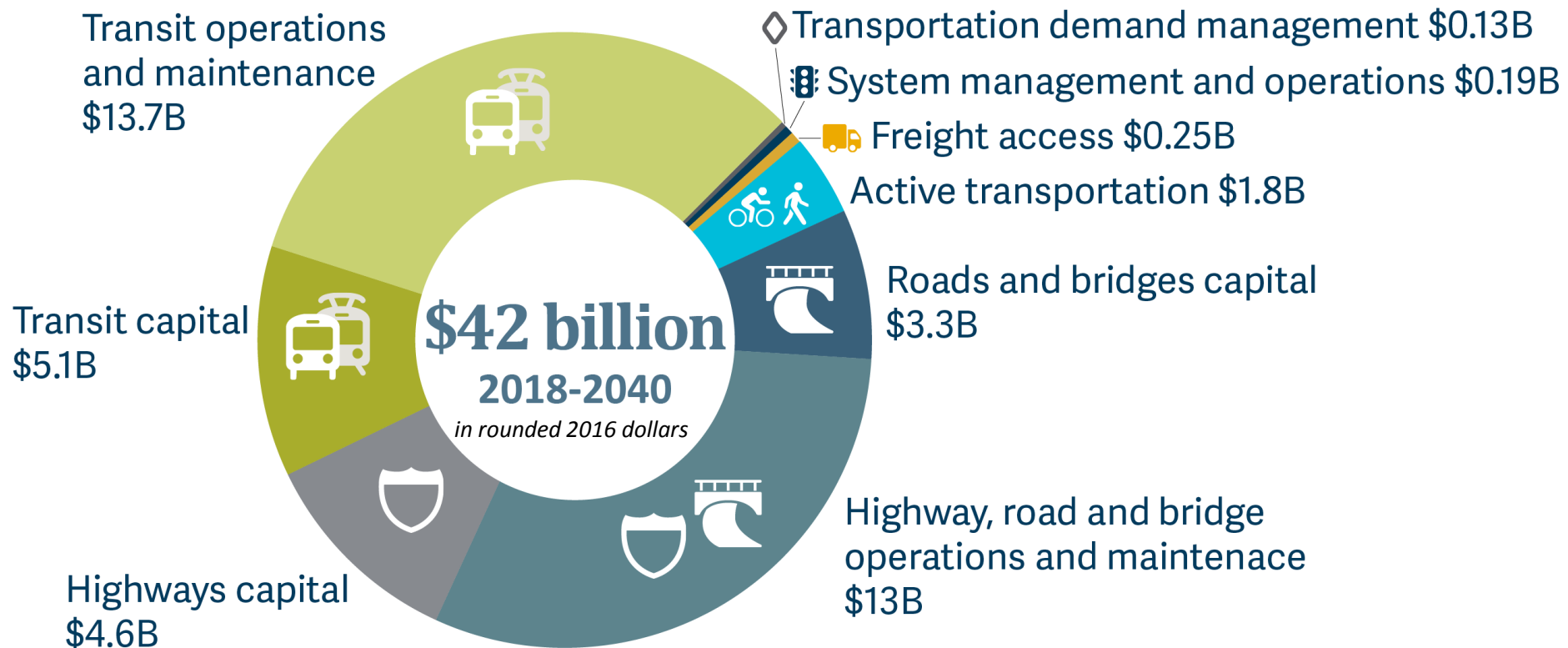
**WE CAN PICKLE ANYTHING!**



# The 2018 Regional Transportation Plan (RTP)



# Maintain, optimize and expand system to meet region's needs



Source: 2018 Regional Transportation Plan Constrained Priorities

# 2018 RTP Priorities



**Equity**



**Climate**

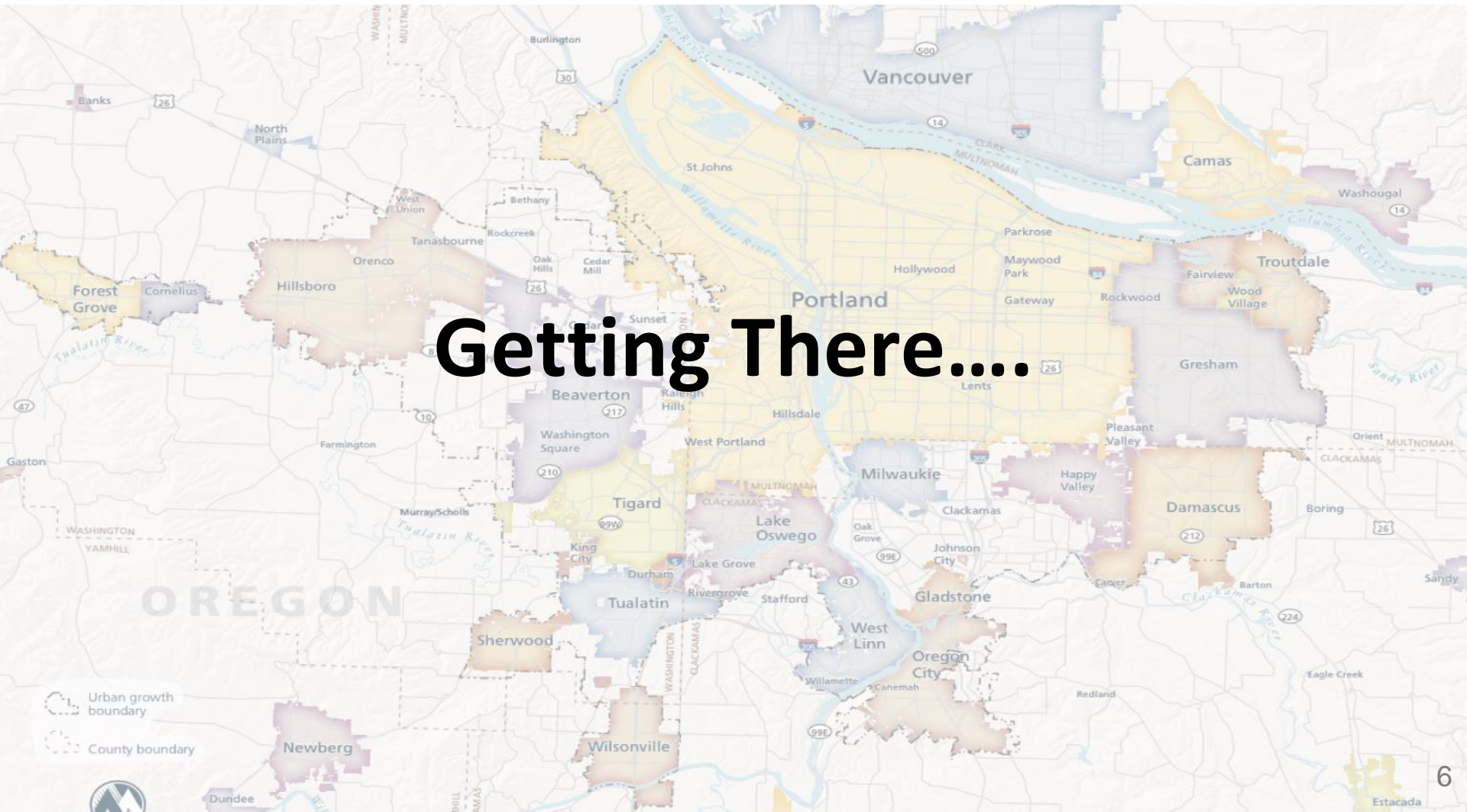


**Safety**



**Manage  
Congestion**

# Getting There....



# Feedback from 2014 Regional Transportation Plan

Feedback from community the Civil Rights Assessment did not reflect community values

Staff recommendation to approach the equity evaluation of the 2018 RTP differently to reflect community values



# 2018 Plan Scoping: central themes and issues

- Traffic
- Safety
- Funding
- Maintenance
- Reliability
- Efficiency
- Travel options
- Access to opportunity (jobs, education and services)
- Health
- Affordability
- Set clear priorities
- Advance consideration of equity and economic impacts





# First plan to carryout the Strategic Plan to Advance Racial Equity, Diversity, Inclusion



Metro's six desired outcomes

Strategic Plan to Advance Racial Equity, Diversity, and Inclusion

The collage features a variety of images: a person in a green hoodie holding a yellow box, a group of people at an outdoor event, a person in a red shirt, a person in a blue shirt, a person in a purple headscarf, a group of people in military-style uniforms, a person in a white headscarf, a person in a blue shirt, a person in a white shirt, a person in a red shirt, and a person in a blue shirt. The Metro logo is in the top left corner, and the date "June 2016" is in the top right corner.

Strategic plan to advance racial equity, diversity and inclusion

oregonmetro.gov

# Process Equity



# Public engagement approach

- Inclusive
- Place-based
- Connected to people's values and experiences
- Transparent
- Accessible
- Partnership oriented



# Many meaningful opportunities to listen, learn and collaborate



Regional Leadership Forum | 2018



Regional Leadership Forum | 2016

Nearly  
**19,000**  
individual  
touch points  
from 2015-18



Regional Leadership Forum | 2016



Community Leaders Forum | 2018

Metro Discussion Groups



Discussion groups | 2015



JPACT meetings | 2015-18



Regional Leadership Forum | 2016



Regional Snapshots | 2016-18



# Engagement with communities

- Regional leadership forums
- Community leader forums
- Briefings and stakeholder meetings/workshops
- Discussion groups/focus groups
- Community tours and stories
- Focused social media and surveys



# Regional Leadership Forums



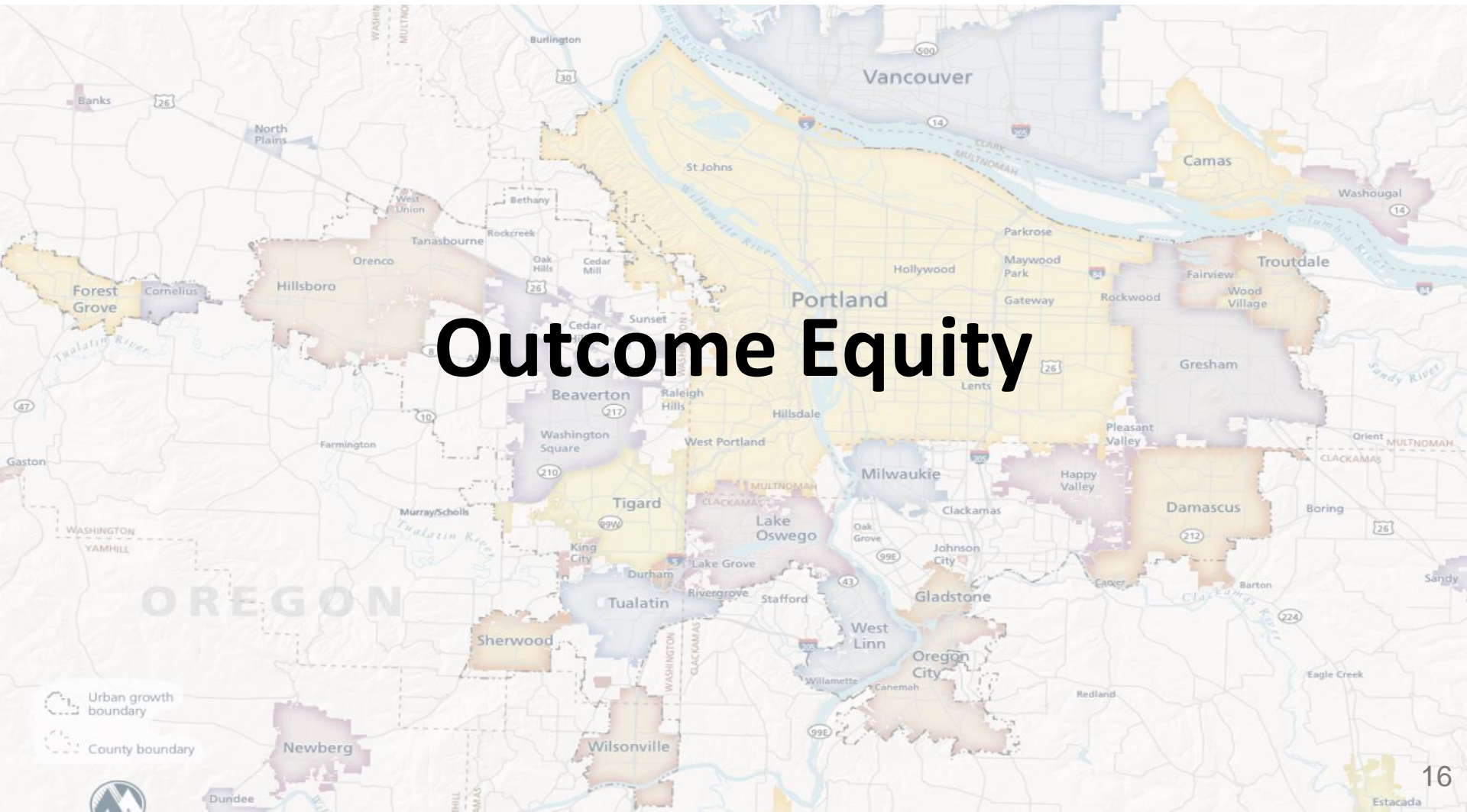
- Four RLF at milestones
- Community, business, elected officials, administrators
- Changed outcomes of 2018 RTP investment strategy
- more emphasis on equity

# Community Leaders Forums



- Two CLF following RLF
- Community focused input
- Changed outcomes of 2018 RTP investment strategy

# Outcome Equity





# Evaluate equity in the Plan's investment program

## Transportation Equity Work Group

- Measure what matters
- Support leadership desire to understand RTP effects on reducing disparities, advancing equitable outcomes
- Partnership w/Portland State University via NITC



*Courtesy of the Street Trust, 2016.*

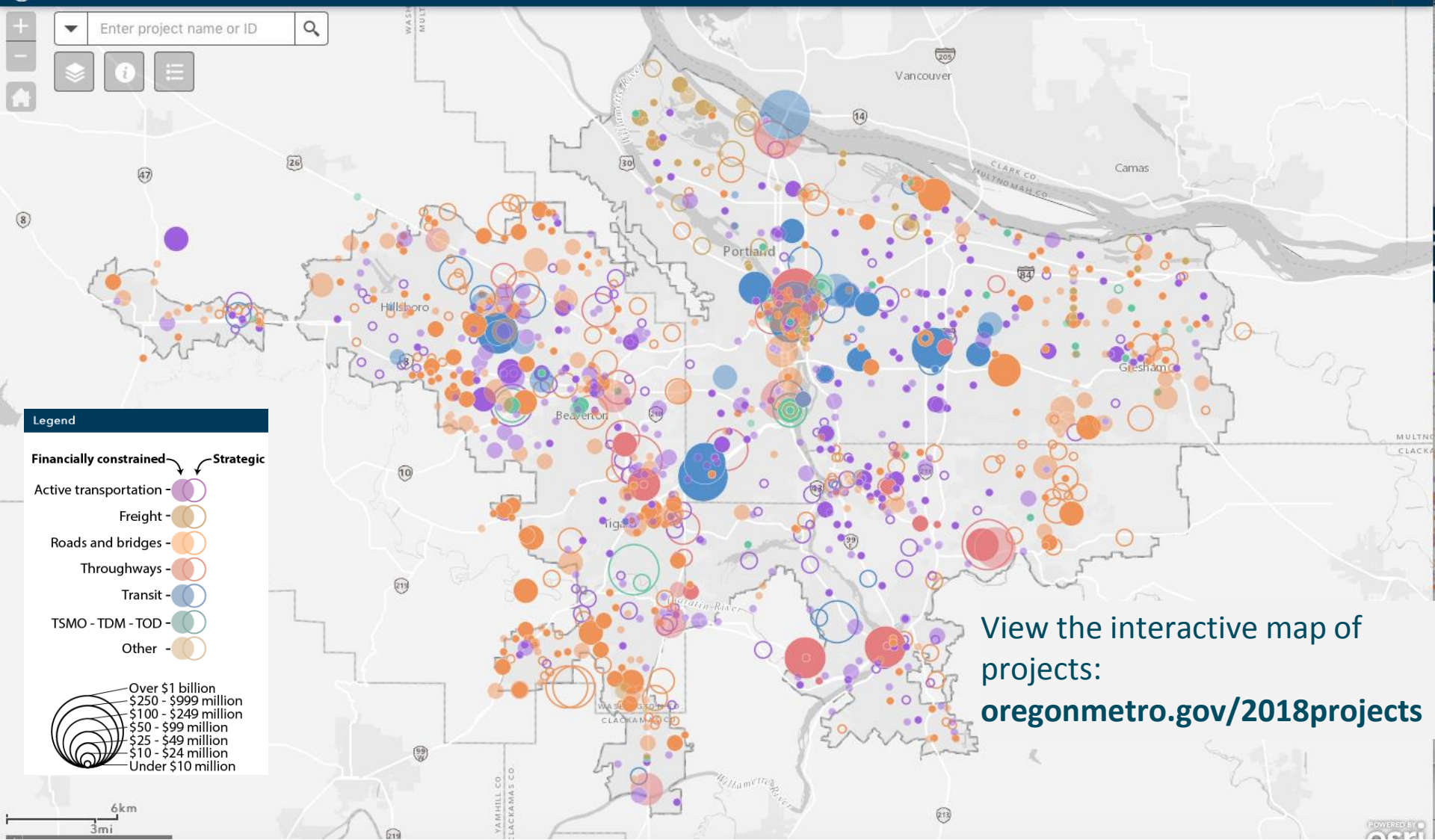
# Transportation Equity Evaluation Measures

- **Access**
  - Jobs and Community Places
- **Safety**
  - Addressing high injury corridors
- **Travel Options**
  - Completeness of the active transportation network
- **Affordability**



# Evaluation Findings: Investment all over the region w/focus on equity focus areas

Metro Draft 2018 RTP Projects



View the interactive map of projects:  
[oregonmetro.gov/2018projects](http://oregonmetro.gov/2018projects)

# Evaluation Findings: Communities of color and lower income households expected to experience multiple benefits

- **Grows access to transit, frequency and ridership**
- **Improves safety, especially on high injury corridors in equity focus areas**
- **Increases affordable travel options, particularly people of color and people with low income**
- **Continue to build out the system, particularly around active travel and transit**





# Challenges

- Same-paging on equity
  - Being okay with being in different places
- Data
- Long haul process
- Pace and speed of actions/recommendations
- Balance: future vs. existing



# But bold leadership helps



# Lessons Learned

- Have the backing
- Variety is key
- Be intentional
- Okay to sit in the passenger seat
  - Community voice leads the way
- Ask and ask again (and again)





# 2018 Regional Transportation Plan

[oregonmetro.gov/rtp](http://oregonmetro.gov/rtp)

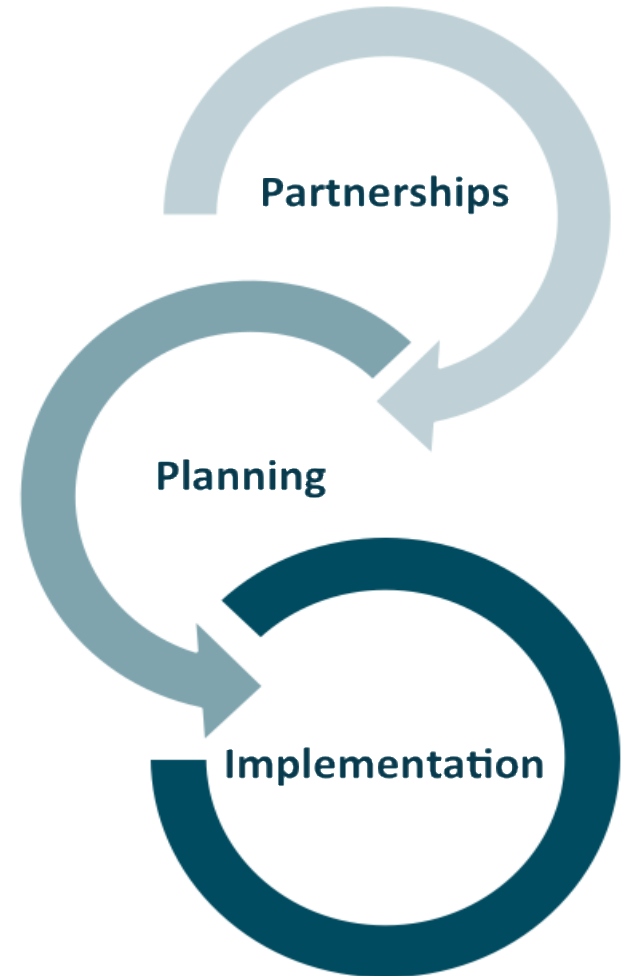




# EXTRA SLIDES

# Sets the foundation for future work, investment and collaboration

- Keeps federal and state dollars coming to the region to build local and regional plans and visions
- Allows major projects to move forward
- Identifies areas where more study, analysis and discussion are needed



# Partner and General Engagement

- Regional leadership forums
- Work groups
- Speakers series
- Briefings and stakeholder meetings/workshops
- Project website
- Online polls and open houses
- Social media
- Newsfeeds and e-news



# Online Engagement and Social Media

## Making a great place: transportation and equity

Take 10 minutes to answer nine questions (followed by optional questions about you) to help Metro plan for and invest in our region's transportation system to create healthy, equitable communities and a strong economy. *Return to Metro by Feb. 16, 2016.*

Metro and its partners are discussing how to best spend about \$38 million over the next few years on biking, walking and freight projects. Projects ideas will compete next year based on one of two options:

1) Set aside some dollars for walking and biking improvements and some for freight improvements, and then let projects compete in separate categories. [Advantage: Targets projects that best meet the goals set for each category and provides clear direction on amount of funds to be spent on each type of project.]

2) Let all potential walking, biking and freight projects compete together. [Advantage: Creates opportunity for projects that are both good for walking and biking and good for freight movement (though not necessarily "the best" at meeting the goals for biking/walking and freight as separate categories).]

### 1. Which option for deciding how projects compete for this money do you support? (pick one)

- Set aside some dollars for walking and biking improvements and some for freight improvements, and then let projects compete in separate categories.
- Let all potential walking, biking and freight projects compete together.

### More about this:

#### Transportation funding overview:

The Portland metropolitan region (the tri-county area from Forest Grove to Oregon City, from Wilsonville to Troutdale) should expect to receive approximately \$300 to 400 million in federal and state aid over the next three years for transportation projects targeting road maintenance and expansion (and walking and biking facilities related to those road projects) and \$10 million specifically for bicycle and pedestrian projects. TriMet and SMART expect to receive approximately \$160 million of state and federal funding during these three years (plus \$300 million in payments toward the Milwaukie light rail project) and will raise additional funds locally, primarily through passenger fares and the payroll tax. Cities and counties raise and spend additional resources to build and maintain the transportation system.

#### Flexible federal funds:

We also expect to receive about \$126 million over three years from federal programs that offer more flexibility in how the dollars are spent. Due to the flexibility in the potential uses of the funds, previous investments include roadway improvements, transit projects, sidewalks and other pedestrian improvements, freight movement improvements and bicycle facilities. Other uses include region-wide programs to improve the management and flow of the transportation system, educate residents about available travel options and pay down bonds on high capacity transit (e.g., light rail) and related investments in priority transportation corridors.

About \$38 million of these funds in this cycle will go specifically to things like sidewalks, crosswalks, bike lanes and trails or projects to improve freight movement to help the regional economy.

\$38 million sounds like a lot, but many transportation projects are expensive. For comparison, here are some examples of other recent transportation projects in the region:

- Sellwood Bridge replacement: \$307 million
- Sunrise Corridor first phase – a new 2.5-mile 4-lane highway in Clackamas County, plus one new I-205 overpass and several related improvements to intersections, drainage, etc.: \$139 million
- Adding one lane each way to U.S. 26 for 2 miles in Washington County: \$33 million
- Flashing beacons at 18 crosswalks in East Portland: \$1.9 million

The needs for the region's transportation system range from building sidewalks where they don't exist, to maintaining roadways, to providing more transit service. Transportation funding from the federal, state, and local governments all help, but the long list of needs continues to grow, and the available funding continues to shrink. These regional flexible funds represent just a small piece of this shrinking pie, but can still achieve a lot if used wisely.

2018 RTP

WELCOME

**We need your input!**

The Regional Transportation Plan is a tool to help strengthen our economy and improve our quality of life by providing safe, reliable, healthy and affordable travel options that connect people to jobs, schools, families, parks and other important places.

Find out more at [oregonmetro.gov/rtp](http://oregonmetro.gov/rtp).

Begin

Metro

It's time to look ahead to what our transportation system can look like in 2040. The 2018 Regional Transportation Plan provides the opportunity to update the investments we will make in roads, sidewalks, bikeways, transit and freight routes to support communities today and in the future.

2 CHOOSE PRIORITIES

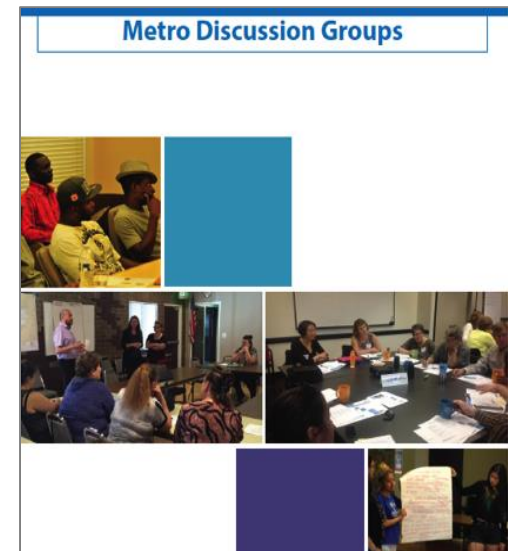
3 RATE STRATEGIES

4 ADDITIONAL THOUGHTS

5 WRAP UP

# Ethnic and culturally specific discussion groups

- Done in partnership with Diversity, Equity, and Inclusion
- Contracted with Community Based Organizations to conduct engagement



# Regional Transportation Plan

Sets long-range vision and goals for moving the region safely, reliably and affordably for decades to come

Uses projections of future population and job growth to identify travel needs and solutions through 2040

Establishes priorities for federal, state and regional funding

Federally required

