



Regional Network Project

Advocating at the MPO Level





Background

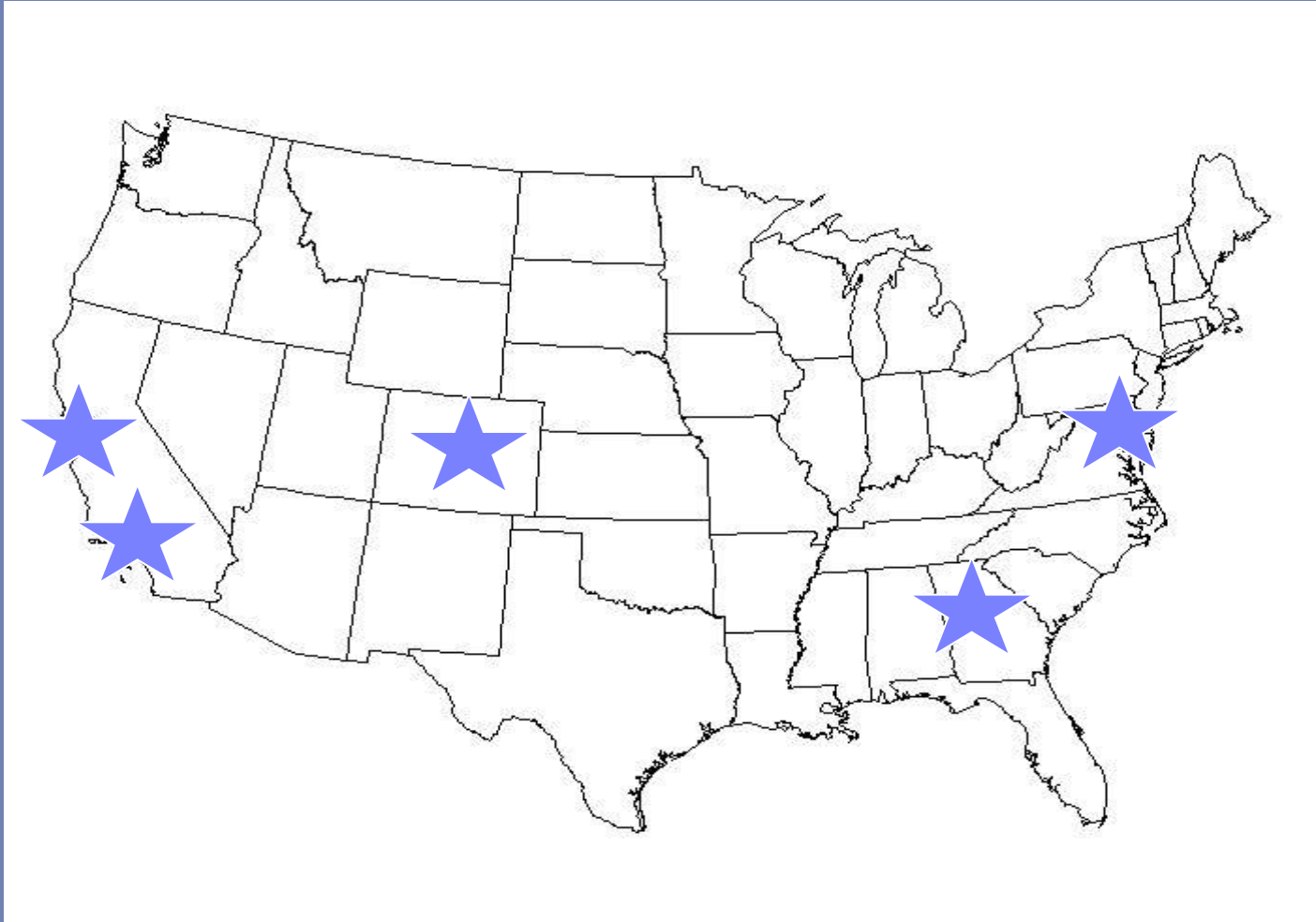
- ✦ Funding through Kaiser Permanente
- ✦ Launched in 2010
- ✦ Expanded in 2012
 - ✦ Atlanta* (ARC)
 - ✦ Denver (DRCOG)
 - ✦ Greater Washington DC (MWCOCG/TPB)
 - ✦ San Francisco Bay Area (MTC)
 - ✦ Southern California (SANDAG & SCAG)



* Under an MOU with the National Association of Chronic Disease Directors.



Background





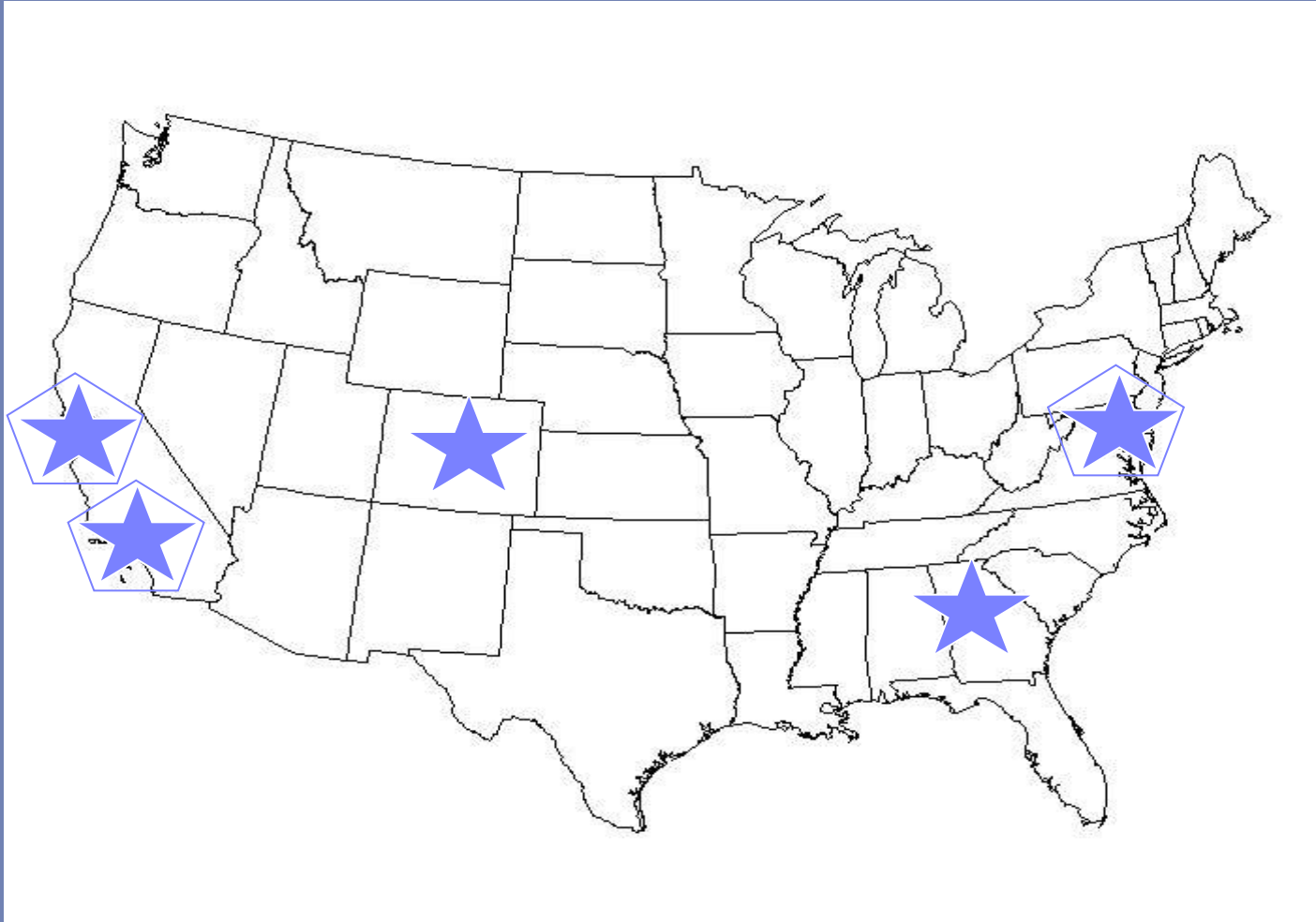
Goals

- Leverage funding
- Change policies
- Affect the built environment
- Expand Safe Routes to School
- Advocate to remove barriers for walking and bicycling
- Share information and best practices





Background





Greater Washington DC Region





Greater Washington DC Region

- ✦ Complete Streets policy spurring local policies
- ✦ Emphasis on member jurisdictions
- ✦ Sharing best practices





San Francisco Bay Area





San Francisco Bay Area

- ✦ RTP revised in Spring 2012
- ✦ \$20M to Safe Routes to School
- ✦ Complete Streets policy requirement





Southern California (SCAG)

- ✦ Revised RTP in Spring 2012
- ✦ Created an active transportation department & subcommittee
- ✦ Tripled funding to active trans to \$6.7B (0.46% to 1.3%)





Southern California (SANDAG)





Southern California (SANDAG)

- ✦ RTP adopted in Fall 2011
- ✦ Created a regional Safe Routes to School plan





Working at the Regional Level

- ✦ Familiarize yourself with the planning documents and the planning process/timetable
- ✦ Show up routinely at relevant MPO committee meetings - *and testify*
- ✦ Develop connections with staff and Board members
- ✦ Educate decision makers about active transportation needs and mechanisms





Working at the Regional Level

- ✦ Build coalitions with other stakeholders:
 - ✦ Health
 - ✦ Environment
 - ✦ Sustainability
 - ✦ Public transit
 - ✦ Equity
 - ✦ Underserved communities
 - ✦ Youth





Lessons Learned

- ✦ Active transportation elements *not* new to RTP process
- ✦ Other key elements
 - ✦ Equity
 - ✦ Health
- ✦ Power of data - mode shares, fatality/injury, funding levels, etc
- ✦ Major growth opportunity for % of funding to bike/ped projects





Lessons Learned

- ✦ It can be lonely out there
- ✦ Relationship building is key
- ✦ It bears repeating - data matters





MAP-21: the Game Changer

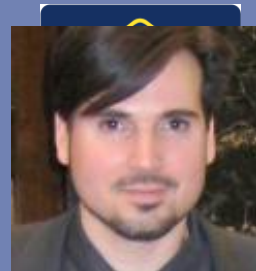
- ✦ 50% of TAP funds go to MPOs (>200k) for distribution
- ✦ Opportunity to help guide the decision-making process





Regional Network Team

- Christine Green, Greater Washington Policy Manager
- Dave Cowan, National Partnership's Program Manager -- works on the Denver project
- Doug Joiner, Atlanta Regional Policy Manager, under contract with the NACDD
- Marty Martinez, Bay Area Policy Manager





Regional Network Team (the SoCal Division)

- Jessica Meaney, Southern California Policy Director
- Rye Baerg, Southern California Regional Policy Manager
- Pauline Chow, Southern California Regional Policy Manager





For More Information

Stephanie Weber

Regional Network Manager

stephanie@saferoutespartnership.org

www.saferoutespartnership.org

